



Welding Technical Textiles

FOCUS | Manufacture of Truck Tarpaulins



Hot-Air and Low-Voltage Technology | Technical Textile Industry



Leister Welding Technology for Technical Textiles

Products from Leister for Professional Welding of Technical Textiles

With the innovative Leister heat guns and welding machines, truck tarpaulins, tents, advertising banners, covers, sun protection and many other products can be processed and welded. When welding technical textiles, the focus is on mechanical strength and aesthetics.

We know how.

Content

Production of High-quality Truck Tarpaulins

Page 4

Welding of Technical Textiles

Page 6

Thermoplastic Materials

Page 8

Seam Types for Truck Tarpaulins

Page 9

Welding Machines

Page 12

Heat Guns

Page 26

Accessories

Page 28

Production of High-quality Truck Tarpaulins

Truck tarpaulins and event tents have to withstand wind and weather. During production, the focus is on economic efficiency and quality. The material is usually PVC. The extremely resistant tarpaulin material is flame-retardant, robust and tear-resistant. When professionally processed, PVC truck tarpaulins are durable and weather-resistant.

Every day, tons of goods are transported on the roads by truck and by large and small vans. Truck tarpaulins need to be long-lasting, secure the load in an optimal way, and be customizable. Transport companies often have varying requirements when it comes to their truck tarpaulins, whether aesthetic or functional. They are usually handmade. Depending on the vehicle equipment, standard canopies, side curtains, sliding tarpaulins and roller tarpaulins are manufactured to enable optimum loading and unloading of the cargo. Printing the company logo or relevant advertising on the tarpaulin completes the job. With welding machines and hot-air blowers from Leister, commercial vehicles are optimally and efficiently equipped with suitable tarpaulins.

In order to produce high-quality truck tarpaulins, manufacturers choose high-quality tarpaulins. Why? Mainly because of the following advantages:

- Long lifespan
- High resilience
- Very watertight
- Good welding capability
- Good printing capability

If you want to weld high-quality tarpaulins, you can always rely on Leister products, which have proven themselves worldwide.

VARIANT 700 Series

The semi-automatic all-rounder for overlap, tape and sprigel applications.

UNIPLAN 300/500

The user-friendly small welding machine for the table or floor.

HEMTEK ST/K-ST

Quick assembly, intuitive operation for hem or piping welds.

SEAMTEK 900 AT/2000 AT

Maximum flexibility, can be configured for specific applications.

SEAMTEK W-900/W-2000 AT

Variable speed - thanks to Leister's innovative low-voltage technology - for maximum efficiency.



Welding of Technical Textiles

If you want to weld technical textiles for truck tarpaulins, tents or similar products, you need professional welding equipment. The goal is to weld the tarpaulins as efficiently and tightly as possible, with high mechanical strength and an attractive appearance. At Leister you will find the right solution for every challenge. Worldwide.

Welding Process Hot-air and Low-voltage Technology

For professional welding of coated fabrics (technical textiles) you need the correct welding technique. This involves melting the plastic surfaces of the textiles in the joining area with the right amount of energy up to the required plasticizing temperature and joining them with the correct joining force. Modern, high-quality Leister welding machines perform these main tasks largely automatically and offer you great ease of use.

Hot-air Technology

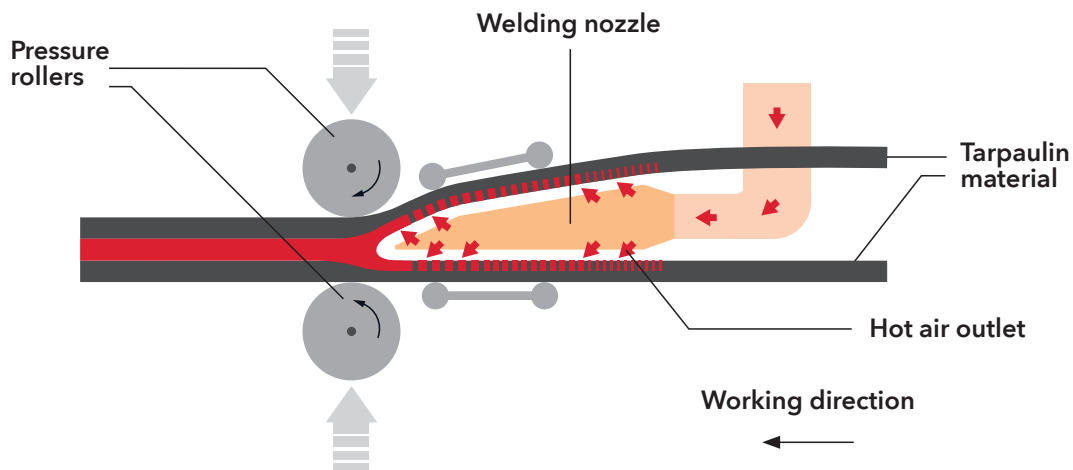
In hot-air welding, hot air is introduced via a nozzle. The process is contactless, relatively simple and versatile.

Advantages

- No contact - energy goes into every gap in hem and cross seam applications
- Versatile - for almost all technical textiles with a thermoplastic coating or films and membranes made from a thermoplastic material
- Easy to use
- Established technology

Disadvantages

- Emissions - smoke emissions are dispersed by blowing in hot air
- Fading - blowing hot air over the material, which can create gloss and/or waves
- Inert system - heating up and regulating the temperature cannot be carried out immediately



Low-voltage Technology

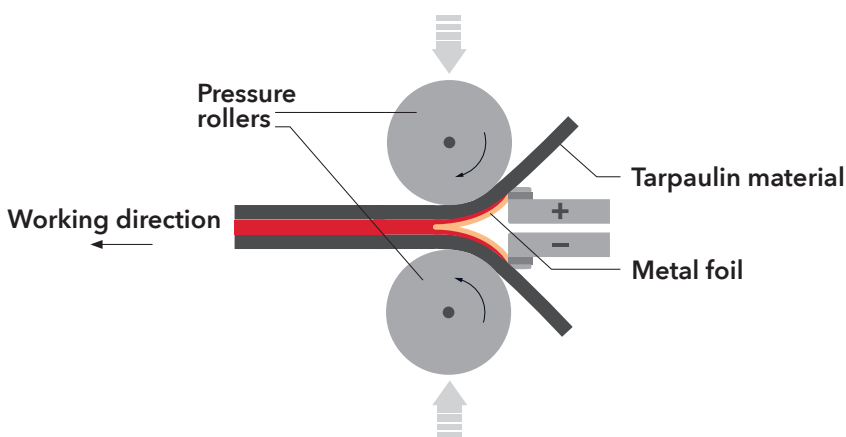
With low-voltage technology, the energy is supplied via a thin metal foil (wedge) with 5V and 300-600 amperes. The wedge heats up in the process. Due to the low mass of the wedge, the temperature is regulated very quickly. The process requires contact with the material to be welded and therefore requires some of attention when adjusting the wedge in order to achieve a constant and good result.

Advantages

- Low mass, fast response time, immediate heating and temperature regulation
- Save power, fast response time switches the wedge off in "standby" mode
- Efficiency - welding speeds are higher than with other technologies thanks to efficient energy input
- Flexible - the speed can be changed during the welding process due to the fast response time, while maintaining the same quality
- Low emissions, smoke and noise
- Low maintenance costs - the only wearing part is the low-cost wedge

Disadvantages

- Contact welding requires a certain amount of experience in wedge adjustment
- Hem and cross seams require special wedges or settings
- Handling the materials requires more experience



**Request a free
expertise now**



Thermoplastic Materials

Thermoplastic-coated fabrics can be coated with different types of thermoplastic polymers, each of which has specific properties and applications. Some of the most commonly used thermoplastics used to coat fabrics are listed below, along with their respective advantages and disadvantages.

Polyvinyl chloride (PVC) - the most popular

Offers a number of advantages, including very good water impermeability, relatively low cost, chemical resistance as well as good abrasion resistance and mechanical strength. The disadvantages are the environmentally harmful dioxins, which can emit gases and lead to health problems, and the decomposition of PVC under UV radiation.

Polyurethane (PU) - the elastic one

PU is very flexible, elastic and breathable, making it ideal for clothing. PU has a high abrasion resistance and is lighter than PVC. The disadvantages are the higher costs, sensitivity to moisture, which can lead to hydrolysis, as well as the environmentally harmful production and difficulty in recycling.

Polyethylene (PE) - the low-cost one

Characterized by high chemical resistance, low cost and UV resistance. The disadvantages are the lower mechanical strength, low heat resistance and reduced flexibility.

Polytetrafluoroethylene (PTFE) - the one that can't be welded

Offers very high temperature resistance, extreme chemical resistance and very low friction. The disadvantages are the high costs, difficult processing and reduced flexibility.

Polypropylene (PP) - the heat-sensitive one

Characterized by good chemical resistance and low weight. The disadvantages are its susceptibility to UV degradation, limited heat resistance and reduced flexibility.

**Arrange a consultation
with experts**



Seam Types for Truck Tarpaulins

The selection of seam types is a key aspect in product design, especially when it comes to manufacturing truck tarpaulins. These seem to have a multitude of requirements and demand a high degree of technical precision and knowledge of the material. The most important seam types are set out below.

① Overlapping seams

These seams are the most commonly used and provide a strong, watertight seal. They are ideal for preventing water penetration and for protecting the load. The overlap seams are primarily used for welding tarpaulin sheets with larger projects such as truck tarpaulins, tents, advertising banners, etc.

② Hem seams

Fully welded hems are mainly used for advertising banners and tarpaulins. The hem seam is used to strengthen the edges of the tarpaulin. Eyelets are usually punched into the seams.

③ Reinforcement tapes

Fully welded reinforcement tapes are used for reinforcement purposes and as fastening and tensioning straps.

④ Reinforcement tapes and Spriegel

Reinforcement tapes welded on both sides are used for sliding curtains on truck tarpaulins and serve to reinforce the sliding curtain or roof system.

⑤ Piped seams

Used for sliding curtains on truck tarpaulins, advertising banners and tents.

⑥ Open hems

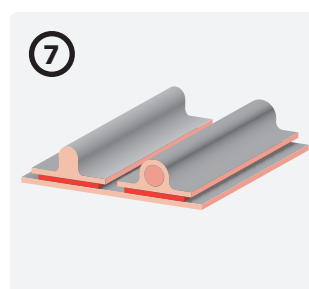
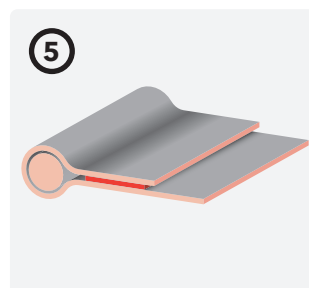
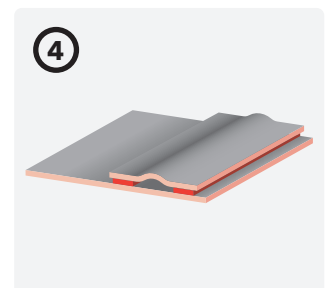
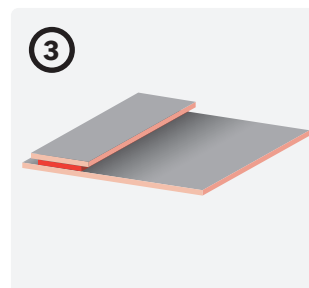
Can be used for advertising banners, standard canopies and tarpaulins.

⑦ Anti-vandalism tapes

Used for sliding curtains on truck tarpaulins and protect against theft of cargo.

⑧ Butt seams with tape

Rarely used for truck tarpaulins, but frequently used in inflatable objects.







Welding Machines

VARIANT 700	12
VARIANT 702	14
VARIANT 704	15
VARIANT 706	16
VARIANT 708	17
UNIPLAN 300	18
UNIPLAN 500	19
HEMTEK ST	20
HEMTEK K-ST	21
SEAMTEK W-900 AT	22
SEAMTEK W-2000 AT	23
SEAMTEK 900 AT	24
SEAMTEK 2000 AT	25

Heat Guns

TRIAC AT	26
TRIAC ST	27

Accessories

Accessories for Welding Machines	28
Accessories for SEAMTEK	34
Further Accessories	42

VARIANT 700



The VARIANT 700's modular design converts from overlap to tape welding and welds up to 20 m/min, ideal for tarpaulins, tents, and banners. Plug-and-play wheels, lift-and-weld technology, and Eco Mode enhance efficiency.

Technical data

Voltage	230 V; 400 V	
Frequency	50/60 Hz	
Power	3680-5500 W	
Speed	1.0-20.0 m/min	3.28-65.62 ft/min
Temperature	100-620 °C	212.0-1148.0 °F
Air volume adjustable	Yes	
Welding nozzle / seam width	20-50 mm	0.78-1.96 in
LQS	No	
Brushless blower motor	Yes	
Brushless drive motor	Yes	
Length	800.0 mm	31.49 in
Width	562.0 mm	22.12 in
Height	347.0 mm	13.66 in
Weight	24.3 kg	53.57 lb
Approvals	CE; UKCA	
Country of origin	CH	

Product items

VARIANT 700, 230V/3680W, 50mm, EU plug	176.859
VARIANT 700, 230V/3680W, 40mm, EU plug	176.860
VARIANT 700, 230V/3680W, 20mm, EU plug	176.861
VARIANT 700, 230V/3680W, 50mm, CEE 3/16	176.862
VARIANT 700, 230V/3680W, 40mm, CEE 3/16	176.863
VARIANT 700, 230V/3680W, 20mm, CEE 3/16	176.864
VARIANT 700, 400V/5500W, 50mm, CEE 5/16	176.865
VARIANT 700, 400V/5500W, 40mm, CEE 5/16	176.866
VARIANT 700, 400V/5500W, 20mm, CEE 5/16	176.867



**Configure
product**

Nozzles



173.640
Overlap welding nozzle 20 mm, right



173.634
Overlap welding nozzle 40 mm, right

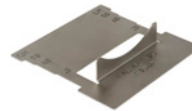


173.638
Overlap welding nozzle 50 mm, right

Machine specific accessories



171.490
Additional weight



178.363
Nozzle adjustment gauge



172.627
Short Left Welding Arm

Spare parts



140.281
Heating element, 230V/4400W



176.853
Heating element, 400V/5500W

All right-hand nozzles are also available as left-hand versions.



VARIANT 702



The VARIANT 702 meets different power needs with 230V and 400V options. It supports 50 mm tape welding and easily converts between tape and overlap welding, ensuring flexibility and optimal performance for professional use.

Technical data

Voltage	230 V; 400 V	
Frequency	50/60 Hz	
Power	3680-5500 W	
Speed	1-20 m/min	3.28-65.62 ft/min
Temperature	100-620 °C	212-1148 °F
Air volume adjustable	Yes	
Welding nozzle / seam width	50 mm	1.96 in
LQS	No	
Brushless blower motor	Yes	
Brushless drive motor	Yes	
Length	800 mm	31.49 in
Width	562 mm	22.12 in
Height	347 mm	13.66 in
Weight	24.3 kg	53.57 lb
Approvals	CE; UKCA	
Protection class	I	
Country of origin	CH	

Product items

VARIANT 702, 230V/3680W, 50mm, EU plug	176.869
VARIANT 702, 230V/3680W, 50mm, CEE 3/16	176.870
VARIANT 702, 400V/5500W, 50mm, CEE 5/16	176.871

Nozzles



176.967
Tape Welding Nozzle 50 mm, right



176.968
Tape Welding Nozzle 25 mm, right

Machine specific accessories



171.324
Tape pressure roller complete 25/50 mm



171.327
Pressure Roller 25 mm, AV



171.490
Additional weight



178.540
Nozzle adjustment gauge

Spare parts



140.281
Heating element, 230V/4400W



176.853
Heating element, 400V/5500W



Configure
product

All right-hand nozzles are also available as left-hand versions.

VARIANT 704



The VARIANT 704 meets different power needs with 230V and 400V options. It supports 25 mm anti-vandalism tape welding and standard applications. The VARIANT 704 is easy to convert between anti-vandalism and overlap welding.

Technical data

Voltage	230 V; 400 V	
Frequency	50/60 Hz	
Power	3680-5500 W	
Speed	1-20 m/min	3.28-65.62 ft/min
Temperature	100-620 °C	212-1148 °F
Air volume adjustable	Yes	
Welding nozzle / seam width	25 mm	0.98 in
LQS	No	
Brushless blower motor	Yes	
Brushless drive motor	Yes	
Length	800 mm	31.49 in
Width	562 mm	22.12 in
Height	347 mm	13.66 in
Weight	24.3 kg	53.57 lb
Approvals	CE; UKCA	
Protection class	I	
Country of origin	CH	

Product items

VARIANT 704, 230V/3680W, 25mm, EU plug	176.873
VARIANT 704, 230V/3680W, 25mm, CEE 3/16	176.874
VARIANT 704, 400V/5500W, 25mm, CEE 5/16	176.875

Nozzles



176.967
Tape Welding Nozzle 50 mm, right



176.968
Tape Welding Nozzle 25 mm, right

Machine specific accessories



171.324
Tape pressure roller complete 25/50 mm



171.327
Pressure Roller 25 mm, AV



171.490
Additional weight



178.540
Nozzle adjustment gauge

Spare parts



140.281
Heating element, 230V/4400W



176.853
Heating element, 400V/5500W



**Configure
product**

All right-hand nozzles are also available as left-hand versions.

VARIANT 706



The efficient VARIANT 706 spriegel welding machine impresses with its dual-nozzle system, which reduces welding time and flexibly switches between different welding types, ideal for truck tarpaulins.

Technical data

Voltage	400 V	
Frequency	50/60 Hz	
Power	11000 W	
Speed	1-20 m/min	3.28-65.62 ft/min
Temperature	100-620 °C	212-1148 °F
Air volume adjustable	Yes	
Welding nozzle / seam width	20 mm	0.78 in
LQS	No	
Brushless blower motor	Yes	
Brushless drive motor	Yes	
Length	800 mm	31.49 in
Width	1059 mm	41.69 in
Height	347 mm	13.66 in
Weight	31.1 kg	68.56 lb
Approvals	CE; UKCA	
Protection class	I	
Country of origin	CH	

Product items

VARIANT 706, 400V/11000W, 20mm, CEE 5/16

176.868

Nozzles



173.640
Overlap welding nozzle 20 mm, right



176.968
Tape Welding Nozzle 25 mm, right



176.966
Overlap welding nozzle 20 mm, left



176.969
Tape Welding Nozzle 25 mm, left

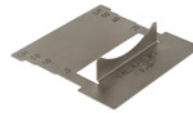
Machine specific accessories



171.327
Pressure Roller 25 mm, AV



171.490
Additional weight



178.363
Nozzle adjustment gauge

Spare parts



176.853
Heating element, 400V/5500W



Configure
product

All accessories can be found from page 28.

VARIANT 708



The efficient VARIANT 708 spriegel welding machine impresses with its dual-nozzle system, which reduces welding time and flexibly switches between different welding types. It also supports anti-vandalism tape welding, ideal for truck tarpaulins.

Technical data

Voltage	400 V	
Frequency	50/60 Hz	
Power	11000 W	
Speed	1-20 m/min	3.28-65.62 ft/min
Temperature	100-620 °C	212-1148 °F
Air volume adjustable	Yes	
Welding nozzle / seam width	25 mm	0.98 in
LQS	No	
Brushless blower motor	Yes	
Brushless drive motor	Yes	
Length	800 mm	31.49 in
Width	1059 mm	41.69 in
Height	347 mm	13.66 in
Weight	31.1 kg	68.56 lb
Approvals	CE; UKCA	
Protection class	I	
Country of origin	CH	

Product items

VARIANT 708, 400V/11000W, 25mm, CEE 5/16

176.877

Nozzles



176.967
Tape Welding Nozzle 50 mm, right



176.968
Tape Welding Nozzle 25 mm, right



176.966
Overlap welding nozzle 20 mm, left



176.969
Tape Welding Nozzle 25 mm, left

Machine specific accessories



171.327
Pressure Roller 25 mm, AV



171.490
Additional weight



178.540
Nozzle adjustment gauge

Spare parts



176.853
Heating element, 400V/5500W



Configure
product

All accessories can be found from page 28.

UNIPLAN 300



The UNIPLAN 300 automatic welder is ideal for automatic and safe overlap, hem and pipe welding of truck tarpaulins, billboards and tents.

Technical data

Voltage	120 V; 230 V	
Frequency	50/60 Hz	
Power	1800-3450 W	
Speed	1-16 m/min	3.28-52.49 ft/min
Temperature	100-620 °C	212-1148 °F
Air volume adjustable	Yes	
Welding nozzle / seam width	20-40 mm	0.78-1.57 in
LQS	No	
Brushless blower motor	No	
Brushless drive motor	Yes	
Length	500 mm	19.68 in
Width	310 mm	12.2 in
Height	300 mm	11.81 in
Weight	15 kg	33.06 lb
Power cable length	3 m	9.84 ft
Approvals	CB Certification; CE; UKCA	
Protection class	I	
Country of origin	CH	

Product items

UNIPLAN 300, 230V/3450W, 40mm, EU plug	164.545
UNIPLAN 300, 230V/3450W, 30mm, EU plug	164.546
UNIPLAN 300, 230V/3450W, 20mm, EU plug	164.547
UNIPLAN 300, 230V/3450W, 40mm, CEE 3/16	164.551
UNIPLAN 300, 230V/3450W, 30mm, CEE 3/16	164.552
UNIPLAN 300, 230V/3450W, 20mm, CEE 3/16	164.553
UNIPLAN 300, 120V/1800W, 40mm, US plug	164.557
UNIPLAN 300, 120V/1800W, 30mm, US plug	164.558



Configure product

Nozzles



164.315
Overlap welding nozzle 20 mm



164.314
Overlap welding nozzle 30 mm



160.421
Overlap welding nozzle 40 mm



174.901
Thermal bonding nozzle

Machine specific accessories



166.550
Piping kit 20 mm, UNIPLAN 300/500



165.600
Piping kit 30 mm, UNIPLAN 300/500



165.400
Piping kit 40 mm, UNIPLAN 300/500



160.351
Additional weight

Spare parts



155.473
Heating element, 230V/3300W



145.604
Heating element, 120V/2300W

All accessories can be found from page 28.

UNIPLAN 500



The user-friendly, automatic welder UNIPLAN 500 has even more welding power and advantages than the UNIPLAN 300. It is perfect for welding taped seams, hems and piping on truck tarpaulins, tents and billboards.

Technical data

Voltage	120 V; 230 V	
Frequency	50/60 Hz	
Power	1800-3450 W	
Speed	1-16 m/min	3.28-52.49 ft/min
Temperature	100-620 °C	212-1148 °F
Air volume adjustable	Yes	
Welding nozzle / seam width	20-40 mm	0.78-1.57 in
LQS	No	
Brushless blower motor	Yes	
Brushless drive motor	Yes	
Length	500 mm	19.68 in
Width	310 mm	12.2 in
Height	300 mm	11.81 in
Weight	16 kg	35.27 lb
Power cable length	3 m	9.84 ft
Approvals	CB Certification; CE; UKCA	
Protection class	I	
Country of origin	CH	

Product items

UNIPLAN 500, 230V/3450W, 40mm, EU plug	164.548
UNIPLAN 500, 230V/3450W, 30mm, EU plug	164.549
UNIPLAN 500, 230V/3450W, 20mm, EU plug	164.550
UNIPLAN 500, 230V/3450W, 40mm, CEE 3/16	164.554
UNIPLAN 500, 230V/3450W, 30mm, CEE 3/16	164.555
UNIPLAN 500, 230V/3450W, 20mm, CEE 3/16	164.556
UNIPLAN 500, 120V/1800W, 40mm, US plug	164.560
UNIPLAN 500, 120V/1800W, 30mm, US plug	164.561
UNIPLAN 500, 120V/1800W, 20mm, US plug	164.562



**Configure
product**

Nozzles



164.315
Overlap welding nozzle 20 mm



164.314
Overlap welding nozzle 30 mm



160.421
Overlap welding nozzle 40 mm



174.901
Thermal bonding nozzle

Machine specific accessories



166.550
Piping kit 20 mm, UNIPLAN 300/500



165.600
Piping kit 30 mm, UNIPLAN 300/500



165.400
Piping kit 40 mm, UNIPLAN 300/500



160.351
Additional weight

Spare parts



155.473
Heating element, 230V/3300W



145.604
Heating element, 120V/2300W

All accessories can be found from page 28.

HEMTEK ST



The efficient HEMTEK ST welding machine welds hems from start to finish, ideal for smaller and medium-sized banners and tarpaulins made of PVC, PE, PP and other thermoplastics.

Technical data

Voltage	120 V; 230 V	
Frequency	50/60 Hz	
Power	1800-3450 W	
Speed	0.8-12.0 m/min	2.62-39.37 ft/min
Temperature	100-650 °C	212.0-1202.0 °F
Air volume adjustable	Yes	
Welding nozzle / seam width	20-40 mm	0.78-1.57 in
Length	433.0 mm	17.04 in
Width	350.0 mm	13.77 in
Height	600.0 mm	23.62 in
Weight	27.0 kg	59.52 lb
Power cable length	3.0 m	9.84 ft
Approvals	CB Certification; CE; UKCA	
Protection class	I	
Country of origin	CH	

Product items

HEMTEK ST, 230V/3450W, 40mm, EU plug	157.860
HEMTEK ST, 230V/3450W, 30mm, EU plug	157.861
HEMTEK ST, 230V/2350W, 20mm, EU plug	157.862
HEMTEK ST, 230V/3450W, 40mm, CEE 3/16	157.866
HEMTEK ST, 230V/3450W, 30mm, CEE 3/16	157.867
HEMTEK ST, 230V/2350W, 20mm, CEE 3/16	157.868
HEMTEK ST, 120V/1800W, 40mm, US plug	157.869
HEMTEK ST, 120V/1800W, 30mm, US plug	157.870
HEMTEK ST, 120V/1800W, 20mm, US plug	157.871



**Configure
product**

Nozzles



157.707
Hem welding nozzle 20 mm



157.706
Hem welding nozzle 30 mm



157.705
Hem welding nozzle 40 mm

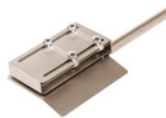
Machine specific accessories



170.589
Double flap keder kit 40 mm



155.800
Adjustable overlap guide



159.780
Tape welding guide



157.879
Adjustable hem and piping guide for heavy materials

Spare parts



153.947
Heating element, 120V/1800W



149.675
Heating element, 230V/2200W



145.606
Heating element, 230V/3300W

All accessories can be found from page 28.

HEMTEK K-ST



The HEMTEK K-ST welds prefabricated piping quickly and effectively. The easy-to-use and infinitely adjustable guide enables safe piping production with different flag widths.

Technical data

Voltage	230 V	
Frequency	50/60 Hz	
Power	2350 W	
Speed	0.8-12.0 m/min	2.62-39.37 ft/min
Temperature	100-650 °C	212.0-1202.0 °F
Air volume adjustable	No	
Welding nozzle / seam width	8 mm	0.31 in
Length	433.0 mm	17.04 in
Width	350.0 mm	13.77 in
Height	600.0 mm	23.62 in
Weight	27.0 kg	59.52 lb
Power cable length	3.0 m	9.84 ft
Approvals	CB Certification; CE; UKCA	
Protection class	I	
Country of origin	CH	

Product items

HEMTEK K-ST, 230V/2350W, 8mm, EU plug 162.499



**Configure
product**

Nozzles



161.259
Flap piping welding nozzle 8 mm

Machine specific accessories



163.798
Nozzle adjustment gauge



116.798
Wire brush, brass

Spare parts



162.379
Pressure roller 8 mm, top



161.202
Pressure roller 40 mm, bottom



149.675
Heating element, 230V/2200W



153.947
Heating element, 120V/1800W

All accessories can be found from page 28.

SEAMTEK W-900 AT



With the innovative SEAMTEK W-900 AT welding machine, users weld technical textiles made of PVC, PE, PU and PP in a particularly efficient manner, while saving on energy consumption.

Technical data

Voltage	230-240 V	
Frequency	50/60 Hz	
Power	3900 W	
Speed	0.5-30.0 m/min	1.64-98.43 ft/min
Temperature	0-680 °C	32.0-1256.0 °F
Length	1500.0 mm	59.05 in
Width	702.0 mm	27.63 in
Height	1500.0 mm	59.05 in
Weight	238.0 kg	524.7 lb
Power cable length	2.0 m	6.56 ft
Approvals	CE; UKCA	
Protection class	I	

Wedges



163.175
HS wedge bracket 25 mm



162.700
3D wedge bracket 25 mm

Machine specific accessories



155.403
Pressure roller 25 mm



157.630
Quickarm (not mounted)



168.354
Parameter switch pedal



142.200
Puller E



158.520
LED Gooseneck lamp



155.660
Adjustable overlap guide 0-64 mm

Spare parts



163.422
3D wedge 25 mm (set of 5)



163.430
HS wedge 25 mm (set of 5)

Wedge holders/replacement wedges/pressure rollers available from 8-64 mm.



Configure
product

SEAMTEK W-2000 AT



The SEAMTEK W-2000 AT welding machine offers users even more space than SEAMTEK W-900 AT. This enables efficient and safe welding of large products made from technical textiles.

Technical data

Voltage	230-240 V	
Frequency	50/60 Hz	
Power	3900 W	
Speed	0.5-30.0 m/min	1.64-98.43 ft/min
Temperature	0-680 °C	32.0-1256.0 °F
Length	2650.0 mm	104.33 in
Width	702.0 mm	27.63 in
Height	1500.0 mm	59.05 in
Weight	403.0 kg	888.46 lb
Power cable length	2.0 m	6.56 ft
Approvals	CE; UKCA	
Protection class	I	

Wedges



163.175
HS wedge bracket 25 mm



162.700
3D wedge bracket 25 mm

Machine specific accessories



155.403
Pressure roller 25 mm



157.630
Quickarm (not mounted)



168.354
Parameter switch pedal



144.200
Puller and Table 2000 E



158.520
LED Gooseneck lamp



155.660
Adjustable overlap guide 0-64 mm

Spare parts



163.422
3D wedge 25 mm (set of 5)



163.430
HS wedge 25 mm (set of 5)

Wedge holders/replacement wedges/pressure rollers available from 8-64 mm.



**Configure
product**

SEAMTEK 900 AT



With the low-maintenance SEAMTEK 900 AT welding machine, even inexperienced users succeed in welding perfect taped seams, hems, piping and tape welds. Intuitive operation via touch screen.

Technical data

Voltage	230-240 V	
Frequency	50/60 Hz	
Power	4500 W	
Speed	0.1-30 m/min	0.32-98.43 ft/min
Temperature	120-700 °C	248-1292 °F
Air volume adjustable	Yes	
Length	1500 mm	59.05 in
Width	702 mm	27.63 in
Height	1500 mm	59.05 in
Weight	238 kg	524.7 lb
Power cable length	2 m	6.56 ft
Approvals	CE; UKCA	
Protection class	I	

Nozzles



151.597
Welding nozzle SEAMTEK 25 mm

Machine specific accessories



154.593
Pressure roller 25 mm



157.630
Quickarm (not mounted)



157.629
Sidearm (not mounted)



142.200
Puller E



158.520
LED Gooseneck lamp



155.760
Adjustable hem and piping guide 0-60 mm



155.660
Adjustable overlap guide 0-64 mm



116.798
Wire brush, brass

Spare parts



150.581
Heating element, 230V/3600W

Nozzles/pressure rollers available in steel or silicone from 8-64 mm.



Configure
product

SEAMTEK 2000 AT



SEAMTEK 2000 AT offers users even more work space than SEAMTEK 900 AT. This enables efficient and safe welding of large products made from technical textiles.

Technical data

Voltage	230-240 V	
Frequency	50/60 Hz	
Power	4500 W	
Speed	0.1-30.0 m/min	0.32-98.43 ft/min
Temperature	120-700 °C	248.0-1292.0 °F
Air volume adjustable	Yes	
Length	2650.0 mm	104.33 in
Width	702.0 mm	27.63 in
Height	1500.0 mm	59.05 in
Weight	403.0 kg	888.46 lb
Power cable length	2.0 m	6.56 ft
Approvals	CE; UKCA	
Protection class	I	

Nozzles



151.597
Welding nozzle SEAMTEK 25 mm

Machine specific accessories



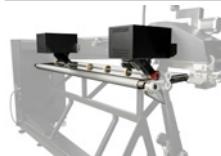
154.593
Pressure roller 25 mm



157.630
Quickarm (not mounted)



157.629
Sidearm (not mounted)



144.200
Puller and Table 2000 E



158.520
LED Gooseneck lamp



155.760
Adjustable hem and piping guide 0-60 mm



155.660
Adjustable overlap guide 0-64 mm



116.798
Wire brush, brass

Spare parts



150.581
Heating element, 230V/3600W



Configure
product

Nozzles/pressure rollers available in steel or silicone from 8-64 mm.

TRIAC AT



The TRIAC AT heat gun is designed to weld and mold plastic. The temperature and air quantity can be set separately by means of its e-Drive control unit.

Technical data

Voltage	100 V; 120 V; 220 V; 230 V	
Frequency	50/60 Hz; 60 Hz	
Power	1500-1600 W	
Temperature	40-620 °C	104.0-1148.0 °F
Temperature setting stepless	Yes	
Airflow (20°C)	120-240 l/min	4.23-8.47 cfm
Stepless air volume adjustment	Yes	
Static pressure	3000 Pa	0.43 psi
Eco-Mode	Yes	
Display	Yes	
e-Drive	Yes	
Outdoor use	Yes	
Nozzle connection ø	31.5 mm / 1.25 in; M14	
Length	335.0 mm	13.18 in
Device diameter	90 mm	3.54 in
Handle diameter	56 mm	2.2 in
Weight	1.02 kg	2.24 lb
Power cable length	3.0 m	9.84 ft
Noise emission level	67 dB (A)	
Approvals	CE	
Protection class	II	
Country of origin	CH	

Product items

TRIAC AT, 230V/1600W, EU plug	141.314
TRIAC AT, 120V/1600W, US plug	141.316
TRIAC AT, 100V/1500W, JP plug	141.317
TRIAC AT, 120V/1600W, CEE 3/16	141.319
TRIAC AT, 230V/1600W, UK plug	141.320
TRIAC AT, 230V/1600W, AU plug	141.321
TRIAC AT, 230V/1600W, CH plug	141.322
TRIAC AT, 230V/1600W, CN plug	141.323
TRIAC AT, 230V/1600W, M14, EU plug	142.737
TRIAC AT, 220V/1600W, KR plug	148.005

Nozzles



107.123
Wide slot nozzle (ø 31.5) 20 x 2 mm



107.132
Wide slot nozzle (ø 31.5) 40 x 2 mm

Spare parts



142.717
Heating element, 230V/1550W



142.718
Heating element, 120V/1550W



Configure
product

TRIAC ST



The TRIAC ST is a robust, universally versatile heat gun for welding plastic membranes, and shrinking and molding various thermoplastics.

Technical data

Voltage	100 V; 120 V; 220 V; 230 V	
Frequency	50/60 Hz; 60 Hz	
Power	1500-1600 W	
Temperature	40-700 °C	104.0-1292.0 °F
Temperature setting stepless	Yes	
Airflow (20°C)	240 l/min	8.47 cfm
Stepless air volume adjustment	No	
Static pressure	3000 Pa	0.43 psi
Eco-Mode	No	
Display	No	
e-Drive	No	
Outdoor use	Yes	
Nozzle connection ø	31.5 mm / 1.25 in; M14	
Length	338.0 mm	13.3 in
Device diameter	90 mm	3.54 in
Handle diameter	56 mm	2.2 in
Weight	0.99 kg	2.18 lb
Power cable length	3.0 m	9.84 ft
Noise emission level	67 dB (A)	
Approvals	CE; KC; S+; UL	
Protection class	II	
Country of origin	CH	

Product items

TRIAC ST, 230V/1600W, EU plug	141.227
TRIAC ST, 120V/1600W, US plug	141.228
TRIAC ST, 100V/1500W, JP plug	141.230
TRIAC ST, 120V/1600W, CEE 3/16	141.308
TRIAC ST, 230V/1600W, UK plug	141.309
TRIAC ST, 230V/1600W, AU plug	141.310
TRIAC ST, 230V/1600W, CH plug	141.311
TRIAC ST, 230V/1600W, CN plug	141.312
TRIAC ST, 230V/1600W, M14, EU plug	144.013
TRIAC ST, 220V/1600W, KR plug	153.891

Nozzles



107.123
Wide slot nozzle (ø 31.5) 20 x 2 mm



107.132
Wide slot nozzle (ø 31.5) 40 x 2 mm

Spare parts



142.717
Heating element, 230V/1550W



142.718
Heating element, 120V/1550W



Configure
product

Accessories for Welding Machines

VARIANT 700 Series

	173.640 Overlap welding nozzle 20 mm, right VARIANT 700, VARIANT 706		171.322 Pressure roller 20 mm VARIANT 700, VARIANT 706
	176.966 Overlap welding nozzle 20 mm, left VARIANT 700, VARIANT 706		171.243 Pressure roller 40 mm VARIANT 700
	173.634 Overlap welding nozzle 40 mm, right VARIANT 700		171.944 Pressure roller 50 mm VARIANT 700
	173.642 Overlap welding nozzle 40 mm, left VARIANT 700		171.324 Tape pressure roller complete 25/50 mm VARIANT 702, VARIANT 704
	173.638 Overlap welding nozzle 50 mm, right VARIANT 700		171.327 Pressure Roller 25 mm, AV VARIANT 708
	173.615 Overlap welding nozzle 50 mm, left VARIANT 700		135.500 Short Right Welding Arm VARIANT 700
	176.967 Tape Welding Nozzle 50 mm, right VARIANT 702		172.627 Short Left Welding Arm VARIANT 700
	176.968 Tape Welding Nozzle 25 mm, right VARIANT 704, VARIANT 708		135.600 Long Right Welding Arm VARIANT 702, VARIANT 704, VARIANT 706, VARIANT 708
	176.969 Tape Welding Nozzle 25 mm, left VARIANT 708		138.700 Long Left Welding Arm VARIANT 702, VARIANT 704, VARIANT 706, VARIANT 708
	178.363 Nozzle adjustment gauge VARIANT 700		139.100 Drive Unit Overlap VARIANT 700, VARIANT 702, VARIANT 704
	178.540 Nozzle adjustment gauge VARIANT 702, VARIANT 704		139.600 Drive Unit Spiegel VARIANT 706

VARIANT 700 Series



139.900
Drive Unit Spiegel, AV
VARIANT 708



142.700
Tape Delivery System
VARIANT 702, VARIANT 704



143.200
Dual Tape Delivery System AV
VARIANT 708



171.490
Additional weight
VARIANT 700, VARIANT 702, VARIANT 704,
VARIANT 706, VARIANT 708



UNIPLAN 300/500



164.315
Overlap welding nozzle 20 mm
UNIPLAN 300, UNIPLAN 500



166.550
Piping kit 20 mm, UNIPLAN 300/500
UNIPLAN 300, UNIPLAN 500



164.314
Overlap welding nozzle 30 mm
UNIPLAN 300, UNIPLAN 500



165.600
Piping kit 30 mm, UNIPLAN 300/500
UNIPLAN 300, UNIPLAN 500



160.421
Overlap welding nozzle 40 mm
UNIPLAN 300, UNIPLAN 500



165.400
Piping kit 40 mm, UNIPLAN 300/500
UNIPLAN 300, UNIPLAN 500



174.901
Thermal bonding nozzle
UNIPLAN 300



175.327
Thermal bonding kit overlap 18 mm
UNIPLAN 300



165.791
Nozzle adjustment gauge
UNIPLAN 300, UNIPLAN 500



175.326
Thermal bonding kit overlap 20 mm
UNIPLAN 300



163.876
Pressure roller 20 mm
UNIPLAN 300, UNIPLAN 500



175.325
Thermal bonding kit overlap 22 mm
UNIPLAN 300



163.875
Pressure roller 30 mm
UNIPLAN 300, UNIPLAN 500



175.330
Thermal bonding kit hem 18 mm
UNIPLAN 300



163.874
Pressure roller 40 mm
UNIPLAN 300, UNIPLAN 500



175.329
Thermal bonding kit hem 20 mm
UNIPLAN 300



159.900
Piping pressure roller 20 mm
UNIPLAN 300, UNIPLAN 500



175.328
Thermal bonding kit hem 22 mm
UNIPLAN 300



160.500
Piping pressure roller 30 mm
UNIPLAN 300, UNIPLAN 500



175.333
Overlap thermal bonding guide 18 mm
UNIPLAN 300



161.100
Piping pressure roller 40 mm
UNIPLAN 300, UNIPLAN 500



175.332
Overlap thermal bonding guide 20 mm
UNIPLAN 300

UNIPLAN 300/500



175.331
Overlap thermal bonding guide 22 mm
UNIPLAN 300



157.000
Material lift-off device
UNIPLAN 300, UNIPLAN 500



175.336
Hem thermal bonding guide 18 mm
UNIPLAN 300



164.497
Weight bracket base
UNIPLAN 300, UNIPLAN 500



175.335
Hem thermal bonding guide 20 mm
UNIPLAN 300



164.498
Weight bracket extension
UNIPLAN 300, UNIPLAN 500



175.334
Hem thermal bonding guide 22 mm
UNIPLAN 300



160.351
Additional weight
UNIPLAN 300, UNIPLAN 500



166.187
Hem and piping guide
UNIPLAN 300, UNIPLAN 500



169.082
Hold-down device
UNIPLAN 300, UNIPLAN 500



163.878
Swivel castor
UNIPLAN 300, UNIPLAN 500



170.639
Swivel castor
UNIPLAN 300, UNIPLAN 500



165.562
Handle short
UNIPLAN 300, UNIPLAN 500



165.542
Handle bracket
UNIPLAN 300, UNIPLAN 500



159.000
Handle long
UNIPLAN 300, UNIPLAN 500

HEMTEK ST/K-ST



157.707
Hem welding nozzle 20 mm
HEMTEK ST



159.780
Tape welding guide
HEMTEK ST



157.706
Hem welding nozzle 30 mm
HEMTEK ST



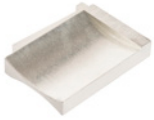
155.800
Adjustable overlap guide
HEMTEK ST



157.705
Hem welding nozzle 40 mm
HEMTEK ST



157.879
Adjustable hem and piping guide for heavy materials
HEMTEK ST



157.098
Nozzle adjustment gauge
HEMTEK ST



170.589
Double flap keder kit 40 mm
HEMTEK ST



157.048
Pressure roller 20 mm
HEMTEK ST



157.540
Rubber plug
HEMTEK ST



157.070
Pressure roller 20 mm, bottom
HEMTEK ST



160.269
Additional weight
HEMTEK ST



157.047
Pressure roller 30 mm
HEMTEK ST



169.971
Tape delivery system
HEMTEK ST



157.071
Pressure roller 30 mm, bottom
HEMTEK ST



108.117
Pressure roller 40 mm
HEMTEK ST



161.202
Pressure roller 40 mm, bottom
HEMTEK K-ST, HEMTEK ST



156.472
Adjustable hem and piping guide
HEMTEK ST



HEMTEK ST
made in Switzerland

LEISTER

Accessories for SEAMTEK

SEAMTEK W-900 AT/W-2000 AT



162.854
3D wedge bracket 8 mm
SEAMTEK W-2000 AT, SEAMTEK W-900 AT



163.174
HS wedge bracket 19 mm
SEAMTEK W-2000 AT, SEAMTEK W-900 AT



162.847
3D wedge bracket 13 mm
SEAMTEK W-2000 AT, SEAMTEK W-900 AT



163.175
HS wedge bracket 25 mm
SEAMTEK W-900 AT



162.846
3D wedge bracket 19 mm
SEAMTEK W-2000 AT, SEAMTEK W-900 AT



163.176
HS wedge bracket 38 mm
SEAMTEK W-2000 AT, SEAMTEK W-900 AT



162.700
3D wedge bracket 25 mm
SEAMTEK W-2000 AT, SEAMTEK W-900 AT



160.110
HS wedge bracket 30 mm
SEAMTEK W-2000 AT, SEAMTEK W-900 AT



160.111
3D wedge bracket 30 mm
SEAMTEK W-2000 AT, SEAMTEK W-900 AT



163.177
HS wedge bracket 50 mm
SEAMTEK W-2000 AT, SEAMTEK W-900 AT



162.809
3D wedge bracket 38 mm
SEAMTEK W-2000 AT, SEAMTEK W-900 AT



163.178
HS wedge bracket 57 mm
SEAMTEK W-2000 AT, SEAMTEK W-900 AT



162.818
3D wedge bracket 50 mm
SEAMTEK W-2000 AT, SEAMTEK W-900 AT



163.179
HS wedge bracket 64 mm
SEAMTEK W-2000 AT, SEAMTEK W-900 AT



162.829
3D wedge bracket 57 mm
SEAMTEK W-2000 AT, SEAMTEK W-900 AT



165.006
Hem Wedge 30 mm incl. bracket
SEAMTEK W-2000 AT, SEAMTEK W-900 AT



162.837
3D wedge bracket 64 mm
SEAMTEK W-2000 AT, SEAMTEK W-900 AT



155.401
Pressure roller 13 mm
SEAMTEK 2000 AT, SEAMTEK 900 AT, SEAMTEK W-2000 AT, SEAMTEK W-900 AT



163.172
HS wedge bracket 8 mm
SEAMTEK W-2000 AT, SEAMTEK W-900 AT



155.402
Pressure roller 19 mm
SEAMTEK 2000 AT, SEAMTEK 900 AT, SEAMTEK W-2000 AT, SEAMTEK W-900 AT

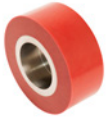


163.173
HS wedge bracket 13 mm
SEAMTEK W-2000 AT, SEAMTEK W-900 AT



155.403
Pressure roller 25 mm
SEAMTEK 2000 AT, SEAMTEK 900 AT, SEAMTEK W-2000 AT, SEAMTEK W-900 AT

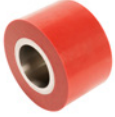
SEAMTEK W-900 AT/W-2000 AT



165.007
Pressure roller 30 mm
SEAMTEK W-2000 AT, SEAMTEK W-900 AT



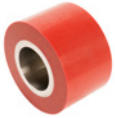
155.540
Modular 3D/prayer seam guide
SEAMTEK 2000 AT, SEAMTEK 900 AT, SEAMTEK W-2000 AT, SEAMTEK W-900 AT



155.404
Pressure roller 38 mm
SEAMTEK 2000 AT, SEAMTEK 900 AT, SEAMTEK W-2000 AT, SEAMTEK W-900 AT



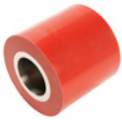
156.760
Overlap guide from left side
SEAMTEK 2000 AT, SEAMTEK 900 AT, SEAMTEK W-2000 AT, SEAMTEK W-900 AT



155.405
Pressure roller 50 mm
SEAMTEK 2000 AT, SEAMTEK 900 AT, SEAMTEK W-2000 AT, SEAMTEK W-900 AT



156.780
Overlap guide for quick arm
SEAMTEK 2000 AT, SEAMTEK 900 AT, SEAMTEK W-2000 AT, SEAMTEK W-900 AT



155.406
Pressure roller 57 mm
SEAMTEK 2000 AT, SEAMTEK 900 AT, SEAMTEK W-2000 AT, SEAMTEK W-900 AT



154.606
Tape delivery system
SEAMTEK 2000 AT, SEAMTEK 900 AT, SEAMTEK W-2000 AT, SEAMTEK W-900 AT



155.407
Pressure roller 64 mm
SEAMTEK 2000 AT, SEAMTEK 900 AT, SEAMTEK W-2000 AT, SEAMTEK W-900 AT



157.630
Quickarm (not mounted)
SEAMTEK 2000 AT, SEAMTEK 900 AT, SEAMTEK W-2000 AT, SEAMTEK W-900 AT



155.400
Holding system for guides
SEAMTEK 2000 AT, SEAMTEK 900 AT, SEAMTEK W-2000 AT, SEAMTEK W-900 AT



159.389
Adjustable pedestal table
SEAMTEK 2000 AT, SEAMTEK 900 AT, SEAMTEK W-2000 AT, SEAMTEK W-900 AT



155.660
Adjustable overlap guide 0-64 mm
SEAMTEK 2000 AT, SEAMTEK 900 AT, SEAMTEK W-2000 AT, SEAMTEK W-900 AT



166.600
Table 900
SEAMTEK 900 AT, SEAMTEK W-900 AT



155.380
Adjustable hem guide
SEAMTEK 2000 AT, SEAMTEK 900 AT, SEAMTEK W-2000 AT, SEAMTEK W-900 AT



158.520
LED Gooseneck lamp
SEAMTEK 2000 AT, SEAMTEK 900 AT, SEAMTEK W-2000 AT, SEAMTEK W-900 AT



155.530
Adjustable hem and piping guide 0-50 mm
SEAMTEK 2000 AT, SEAMTEK 900 AT, SEAMTEK W-2000 AT, SEAMTEK W-900 AT



154.609
Supervision monitoring system
SEAMTEK 2000 AT, SEAMTEK 900 AT, SEAMTEK W-2000 AT, SEAMTEK W-900 AT



155.760
Adjustable hem and piping guide 0-60 mm
SEAMTEK 2000 AT, SEAMTEK 900 AT, SEAMTEK W-2000 AT, SEAMTEK W-900 AT



175.636
OPC/UA Interface
SEAMTEK W-2000 AT, SEAMTEK W-900 AT



165.601
Butt guide
SEAMTEK 2000 AT, SEAMTEK 900 AT, SEAMTEK W-2000 AT, SEAMTEK W-900 AT



142.200
Puller E
SEAMTEK 2000 AT, SEAMTEK 900 AT, SEAMTEK W-2000 AT, SEAMTEK W-900 AT

SEAMTEK W-900 AT/W-2000 AT



168.354
Parameter switch pedal
SEAMTEK W-900 AT



163.426
3D wedge 64 mm (set of 5)
SEAMTEK W-2000 AT, SEAMTEK W-900 AT



173.413
Parameter switch pedal
SEAMTEK W-2000 AT



163.427
HS wedge 8 mm (set of 5)
SEAMTEK W-2000 AT, SEAMTEK W-900 AT



160.330
Addition power supply 1500W
SEAMTEK W-2000 AT, SEAMTEK W-900 AT



163.428
HS wedge 13 mm (set of 5)
SEAMTEK W-2000 AT, SEAMTEK W-900 AT



163.419
3D wedge 8 mm (set of 5)
SEAMTEK W-2000 AT, SEAMTEK W-900 AT



163.429
HS wedge 19 mm (set of 5)
SEAMTEK W-2000 AT, SEAMTEK W-900 AT



163.420
3D wedge 13 mm (set of 5)
SEAMTEK W-2000 AT, SEAMTEK W-900 AT



163.430
HS wedge 25 mm (set of 5)
SEAMTEK W-2000 AT, SEAMTEK W-900 AT



163.421
3D wedge 19 mm (set of 5)
SEAMTEK W-2000 AT, SEAMTEK W-900 AT



165.008
HS wedge 30 mm (set of 5)
SEAMTEK W-2000 AT, SEAMTEK W-900 AT



163.422
3D wedge 25 mm (set of 5)
SEAMTEK W-2000 AT, SEAMTEK W-900 AT



163.431
HS wedge 38 mm (set of 5)
SEAMTEK W-2000 AT, SEAMTEK W-900 AT



165.009
3D wedge 30 mm (set of 5)
SEAMTEK W-2000 AT, SEAMTEK W-900 AT



163.432
HS wedge 50 mm (set of 5)
SEAMTEK W-2000 AT, SEAMTEK W-900 AT



163.423
3D wedge 38 mm (set of 5)
SEAMTEK W-2000 AT, SEAMTEK W-900 AT



163.433
HS wedge 57 mm (set of 5)
SEAMTEK W-2000 AT, SEAMTEK W-900 AT



163.424
3D wedge 50 mm (set of 5)
SEAMTEK W-2000 AT, SEAMTEK W-900 AT



163.434
HS wedge 64 mm (set of 5)
SEAMTEK W-2000 AT, SEAMTEK W-900 AT



163.425
3D wedge 57 mm (set of 5)
SEAMTEK W-2000 AT, SEAMTEK W-900 AT



162.857
3D filling piece 8 mm
SEAMTEK W-2000 AT, SEAMTEK W-900 AT

SEAMTEK W-900 AT/W-2000 AT



162.850
3D filling piece 13 mm
SEAMTEK W-2000 AT, SEAMTEK W-900 AT



163.401
HS filling piece 25 mm
SEAMTEK W-2000 AT, SEAMTEK W-900 AT



162.843
3D filling piece 19 mm
SEAMTEK W-2000 AT, SEAMTEK W-900 AT



163.390
HS filling piece 30 mm
SEAMTEK W-2000 AT, SEAMTEK W-900 AT



162.701
3D filling piece 25 mm
SEAMTEK W-2000 AT, SEAMTEK W-900 AT



163.406
HS filling piece 38 mm
SEAMTEK W-2000 AT, SEAMTEK W-900 AT



163.386
3D filling piece 30 mm
SEAMTEK W-2000 AT, SEAMTEK W-900 AT



163.410
HS filling piece 50 mm
SEAMTEK W-2000 AT, SEAMTEK W-900 AT



162.805
3D filling piece 38 mm
SEAMTEK W-2000 AT, SEAMTEK W-900 AT



163.414
HS filling piece 57 mm
SEAMTEK W-2000 AT, SEAMTEK W-900 AT



162.820
3D filling piece 50 mm
SEAMTEK W-2000 AT, SEAMTEK W-900 AT



163.418
HS filling piece 64 mm
SEAMTEK W-2000 AT, SEAMTEK W-900 AT



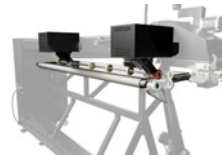
162.831
3D filling piece 57 mm
SEAMTEK W-2000 AT, SEAMTEK W-900 AT



142.500
Table 2000
SEAMTEK 2000 AT, SEAMTEK W-2000 AT



162.836
3D filling piece 64 mm
SEAMTEK W-2000 AT, SEAMTEK W-900 AT



144.200
Puller and Table 2000 E
SEAMTEK 2000 AT, SEAMTEK W-2000 AT



163.193
HS filling piece 8 mm
SEAMTEK W-2000 AT, SEAMTEK W-900 AT



163.197
HS filling piece 13 mm
SEAMTEK W-2000 AT, SEAMTEK W-900 AT



163.397
HS filling piece 19 mm
SEAMTEK W-2000 AT, SEAMTEK W-900 AT

SEAMTEK 900 AT/2000 AT



157.808
Welding nozzle SEAMTEK 900 AT 8 mm (low air flow)
SEAMTEK 2000 AT, SEAMTEK 900 AT



153.730
Tape welding nozzle SEAMTEK 25 mm
SEAMTEK 2000 AT, SEAMTEK 900 AT



157.799
Welding nozzle SEAMTEK 900 AT 13 mm (low air flow)
SEAMTEK 2000 AT, SEAMTEK 900 AT



152.931
Tape welding nozzle adjustable SEAMTEK 15-50 mm
SEAMTEK 2000 AT, SEAMTEK 900 AT



151.598
Welding nozzle SEAMTEK 13 mm
SEAMTEK 2000 AT, SEAMTEK 900 AT



169.257
Adjustable nozzle for zipper (2 x 3-25 mm)
SEAMTEK 2000 AT, SEAMTEK 900 AT



151.601
Welding nozzle SEAMTEK 19 mm
SEAMTEK 2000 AT, SEAMTEK 900 AT



175.559
Keder Nozzle SEAMTEK 8-13 mm
SEAMTEK 2000 AT, SEAMTEK 900 AT



151.597
Welding nozzle SEAMTEK 25 mm
SEAMTEK 2000 AT, SEAMTEK 900 AT



155.392
Pressure roller 8 mm
SEAMTEK 2000 AT, SEAMTEK 900 AT



151.608
Welding nozzle SEAMTEK 38 mm
SEAMTEK 2000 AT, SEAMTEK 900 AT



155.393
Pressure roller 13 mm
SEAMTEK 2000 AT, SEAMTEK 900 AT



151.599
Welding nozzle SEAMTEK 50 mm
SEAMTEK 2000 AT, SEAMTEK 900 AT



155.863
Pressure roller 19 mm
SEAMTEK 2000 AT, SEAMTEK 900 AT



151.850
Welding nozzle SEAMTEK 55 mm
SEAMTEK 2000 AT, SEAMTEK 900 AT



154.593
Pressure roller 25 mm
SEAMTEK 2000 AT, SEAMTEK 900 AT



151.600
Welding nozzle SEAMTEK 64 mm
SEAMTEK 2000 AT, SEAMTEK 900 AT



155.864
Pressure roller 38 mm
SEAMTEK 2000 AT, SEAMTEK 900 AT



152.956
Hem welding nozzle SEAMTEK 25mm
SEAMTEK 2000 AT, SEAMTEK 900 AT



155.865
Pressure roller 57 mm
SEAMTEK 2000 AT, SEAMTEK 900 AT



152.941
Sealing nozzle SEAMTEK 25 mm
SEAMTEK 2000 AT, SEAMTEK 900 AT



155.394
Pressure roller 50 mm
SEAMTEK 2000 AT, SEAMTEK 900 AT

SEAMTEK 900 AT/2000 AT



154.619
Pressure roller 64 mm
SEAMTEK 2000 AT, SEAMTEK 900 AT



155.401
Pressure roller 13 mm
SEAMTEK 2000 AT, SEAMTEK 900 AT, SEAMTEK W-2000 AT, SEAMTEK W-900 AT



155.402
Pressure roller 19 mm
SEAMTEK 2000 AT, SEAMTEK 900 AT, SEAMTEK W-2000 AT, SEAMTEK W-900 AT



155.403
Pressure roller 25 mm
SEAMTEK 2000 AT, SEAMTEK 900 AT, SEAMTEK W-2000 AT, SEAMTEK W-900 AT



155.404
Pressure roller 38 mm
SEAMTEK 2000 AT, SEAMTEK 900 AT, SEAMTEK W-2000 AT, SEAMTEK W-900 AT



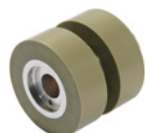
155.405
Pressure roller 50 mm
SEAMTEK 2000 AT, SEAMTEK 900 AT, SEAMTEK W-2000 AT, SEAMTEK W-900 AT



155.406
Pressure roller 57 mm
SEAMTEK 2000 AT, SEAMTEK 900 AT, SEAMTEK W-2000 AT, SEAMTEK W-900 AT



155.407
Pressure roller 64 mm
SEAMTEK 2000 AT, SEAMTEK 900 AT, SEAMTEK W-2000 AT, SEAMTEK W-900 AT



170.005
Pressure roller, adjustable for zipper (0-14 mm)
SEAMTEK 2000 AT, SEAMTEK 900 AT



155.400
Holding system for guides
SEAMTEK 2000 AT, SEAMTEK 900 AT, SEAMTEK W-2000 AT, SEAMTEK W-900 AT



155.660
Adjustable overlap guide 0-64 mm
SEAMTEK 2000 AT, SEAMTEK 900 AT, SEAMTEK W-2000 AT, SEAMTEK W-900 AT



155.530
Adjustable hem and piping guide 0-50 mm
SEAMTEK 2000 AT, SEAMTEK 900 AT, SEAMTEK W-2000 AT, SEAMTEK W-900 AT



155.760
Adjustable hem and piping guide 0-60 mm
SEAMTEK 2000 AT, SEAMTEK 900 AT, SEAMTEK W-2000 AT, SEAMTEK W-900 AT



155.380
Adjustable hem guide
SEAMTEK 2000 AT, SEAMTEK 900 AT, SEAMTEK W-2000 AT, SEAMTEK W-900 AT



155.540
Modular 3D/prayer seam guide
SEAMTEK 2000 AT, SEAMTEK 900 AT, SEAMTEK W-2000 AT, SEAMTEK W-900 AT



156.770
Adjustable acrylic tape welding guide
SEAMTEK 2000 AT, SEAMTEK 900 AT



165.601
Butt guide
SEAMTEK 2000 AT, SEAMTEK 900 AT, SEAMTEK W-2000 AT, SEAMTEK W-900 AT



156.760
Overlap guide from left side
SEAMTEK 2000 AT, SEAMTEK 900 AT, SEAMTEK W-2000 AT, SEAMTEK W-900 AT



156.780
Overlap guide for quick arm
SEAMTEK 2000 AT, SEAMTEK 900 AT, SEAMTEK W-2000 AT, SEAMTEK W-900 AT



154.606
Tape delivery system
SEAMTEK 2000 AT, SEAMTEK 900 AT, SEAMTEK W-2000 AT, SEAMTEK W-900 AT



157.629
Sidearm (not mounted)
SEAMTEK 900 AT



157.630
Quickarm (not mounted)
SEAMTEK 2000 AT, SEAMTEK 900 AT, SEAMTEK W-2000 AT, SEAMTEK W-900 AT

SEAMTEK 900 AT/2000 AT



159.389
Adjustable pedestal table
SEAMTEK 2000 AT, SEAMTEK 900 AT, SEAMTEK W-2000 AT, SEAMTEK W-900 AT



121.400
Parameter switch pedal
SEAMTEK 2000 AT



166.600
Table 900
SEAMTEK 900 AT, SEAMTEK W-900 AT



158.520
LED Gooseneck lamp
SEAMTEK 2000 AT, SEAMTEK 900 AT, SEAMTEK W-2000 AT, SEAMTEK W-900 AT



155.410
Connection adapter for suction unit
SEAMTEK 2000 AT, SEAMTEK 900 AT



154.609
Supervision monitoring system
SEAMTEK 2000 AT, SEAMTEK 900 AT, SEAMTEK W-2000 AT, SEAMTEK W-900 AT



175.637
OPC/UA Interface
SEAMTEK 2000 AT, SEAMTEK 900 AT



142.200
Puller E
SEAMTEK 2000 AT, SEAMTEK 900 AT, SEAMTEK W-2000 AT, SEAMTEK W-900 AT



168.924
Parameter switch pedal
SEAMTEK 900 AT



158.789
Tape cutting device 18-25 mm
SEAMTEK 2000 AT, SEAMTEK 900 AT



142.500
Table 2000
SEAMTEK 2000 AT, SEAMTEK W-2000 AT



144.200
Puller and Table 2000 E
SEAMTEK 2000 AT, SEAMTEK W-2000 AT



Further Accessories

General accessories



137.855
Utility Knife



157.544
Utility scissors, 260 mm / 10.2 in



140.160
Pressure roller 40 mm, silicone



140.161
Pressure roller 28 mm, silicone



106.976
Pressure roller 28 mm, PTFE



116.798
Wire brush, brass



160.353
Cable reel 25 m (PUR), 5 x 2.5 mm², CEE 400V/16A;
2xEU 3/16, 1xCEE 5/16



161.207
Cable reel 25 m (PUR), 5 x 2.5 mm², CEE 400V/16A;
2xFR, BE, CZ, PL Type E, 1xCEE 5/16



164.048
Cable roll 45 m (PUR), 3 x 2.5 mm², EU 230V/16A;
4xEU 3/16



159.239
Extension cable 15 m (PUR), 3 x 2.5 mm², EU
230V/16A



160.015
Extension cable 15 m (PUR), 5 x 2.5 mm², CEE
400V/16A

Legal Notices

Contents

We endeavor to ensure all information is correct, up-to-date and complete while carefully preparing the contents of this brochure. We cannot assume any liability for the information offered. We reserve the right to change or update all information provided at any time without further notice.

Copyright/Industrial Property Rights

Texts, images, graphics and their arrangement are subject to copyright protection and other protective laws. The reproduction, modification, transfer or publication of part or all of the contents of this brochure is prohibited in any form, except for private, non-commercial purposes.

All marks contained in this brochure (protected trademarks, such as logos and business names) are the property of Leister AG, Leister Brands AG or third parties and may not be used, copied or distributed without prior written consent.

Modifications

Modifications can be made at any time.

© Leister AG
Galileo-Strasse 10
6056 Kaegiswil
Switzerland

+41 41 662 74 74
leister@leister.com
leister.com



**Sign up now
for the newsletter**



Leister

Leister Technologies AG is an ISO 9001 certified enterprise.