



Welding Roof Membranes

FOCUS | Safe Joining with Controlled Hot Air Technology



Construction | Flat and Pitched Roofs



Leister Products for Plastic and Bitumen Welding in the Construction Industry

Leister Solutions for Roof Sealing

If you weld waterproofing membranes on flat and pitched roofs, you need to be able to rely on the quality and reliability of your welding machines. For decades, Leister has been synonymous with reliable, durable and innovative products as well as outstanding all-round service. Worldwide.

We know how.

Content

Reliable Joining of Roof Membranes

Page 4

The Right Product for Every Application

Page 5

Welding even with Undervoltage

Page 6

Quality Assurance with LQS Roofing

Page 7

Welding Machines

Page 10

Hot Air Blowers

Page 18

Accessories

Page 26

Reliable Joining of Roof Membranes

Flat roof construction continues its growth trend and meets today's performance requirements. Whether a logistics center or functional industrial roof - today, flat roofs are used to generate added value for the building owner and the environment.

The four Requirements for a Utility Roof

- It should be permanently sealed to provide protection against external influences.
- It should be planted with vegetation to enable retention, hold water and provide relief for the storm sewer system.
- A photovoltaic system and a hot water generation system should be installed in order to generate a return.
- The vegetation is intended to create biodiversity and improve the microclimate in order to give the roof area back to nature.

Under the right conditions, flat roofs offer an excellent opportunity to transform protective roofs into utility roofs. These days, building owners no longer have to choose between photovoltaic systems and green roofs, as a combination of both is particularly beneficial.



Safe Welding of Roof Membranes

Due to increased requirements and multiple uses, a permanently watertight flat roof is essential. This is why high-quality welding equipment is essential. The automatic welding machines VARIMAT 700 and VARIMAT 500 from Leister, launched in 2024, will exceed your expectations and inspire you. Both welding machines are equipped with the Leister Quality System (LQS), power management and Monitored Welding Assistant. The VARIMAT 700 is providing you with a GPS-supported report to document your welding.

You can weld reliably even when dealing with undervoltage of up to 20 %. And if you do leave the welding window, your VARIMAT will issue a visual and audible warning signal. Plastic welding has never been more dependable.

"Leister has everything we need. Here we can find the right welding machine for every roof application and we are delighted with the quality. We have been depending on Leister for years for reliable appliances, expert advice and perfect service."

Ivo Mathis
CEO Mathis Flachdach AG

**Request a free
expertise now**



The Right Product for Every Application

Whether you're sealing flat or pitched roofs, Leister has the right product for every application. The overlap welding machines VARIMAT 700, VARIMAT 500 and VARIMAT 300 set new standards when it comes to roof sealing. Based on analysis and feedback from our customer base around the world, we have developed a new generation of welding machines that are even more flexible, reliable and easier to operate.

Welding with the Correct Parameters

Leister has been working successfully for years with well-known membrane manufacturers, experts, associations and roofers. This allows us to understand your needs and continuously develop our products.

You want process security when welding all thermoplastic membranes. That's why it's always our goal to help you minimize sources of error. The solution is the Monitored Welding Assistant, which monitors your weld electronically. If modern welding machines go over or under welding parameter limits, an electronic assistant is activated and informs the user with a visual and acoustic alarm.

To set the correct welding parameters, you will find proven welding profiles in the myLeister app and in the menus of the VARIMAT 700, VARIMAT 500 and UNIROOF 700 welding machines.

Your Benefits at a Glance

- Top-quality welding – always at the cutting edge of technology, customized to your needs and applications
- Constant welding, even when dealing with undervoltage and difficult construction site conditions thanks to controlled parameters and power management
- Quality assurance thanks to LQS Roofing (GPS welding protocol) and the Monitored Welding Assistant
- High welding speed and reliable weld width
- Welding window for determining welding parameters
- Machines with intuitive operation and large displays
- Low maintenance costs thanks to brushless motors and the use of high-quality components as well as long heating element service life
- Long spare parts guarantee and highly-skilled service
- Energy-saving Eco-Mode

Product Overview of Flat Roof Welding Machines

Function	VARIMAT 700	VARIMAT 500	VARIMAT 300	UNIROOF 700	UNIROOF 300	UNIDRIVE 500	BITUMAT B2
Leister Quality System (LQS)	✓			✓			
Monitored Welding Assistant	✓	✓		✓			
Power management	✓	✓		✓			
Display closed loop technology	✓	✓	✓	✓	✓	✓	
Welding recipes	✓	✓		✓			
Application protection and test weld mode	✓						
Conversion kit 400 V, 230 V	✓	✓					
Pressure measurement	✓						
Working light	✓	✓					
Brushless motors	✓	✓		✓		✓	
Movable transport axel	✓	✓	✓	✓	✓		
Welding speed m/min	6-7	6-7	3-4	2-3	2-2.5	1.5-2.2	5-7
Application							
Large roofs (>500 m ²)	✓	✓	✓				✓
Medium roofs (<500 m ²)	✓	✓	✓	✓	✓	✓	✓
Small roofs (<200 m ²)				✓	✓	✓	
Modified Bitumen membranes				✓	✓		✓

Welding even with Undervoltage

Roofers struggle with undervoltage on construction sites all over the world. This is usually due to overloaded temporary construction site power supplies and faulty extension cables. Leister welding machines with power management and controlled electronics provide a solution.

Power Management: your Advantage when Dealing with Undervoltage

If you use Leister VARIMAT 700, VARIMAT 500 and UNIROOF 700 welding machines, you will achieve the required welding temperature even with undervoltage up to a maximum of 20 %. The reason: Leister power management.

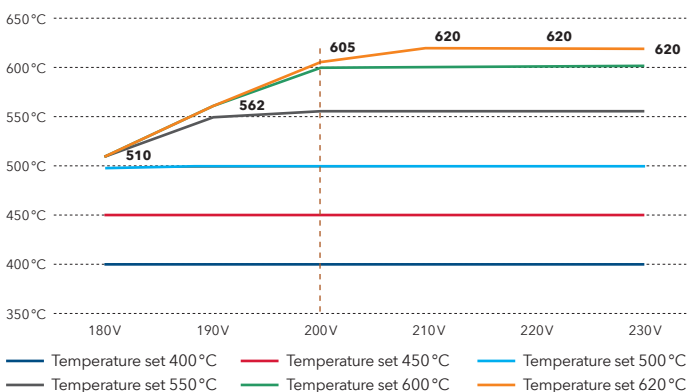
At an undervoltage of more than 20 %, the Leister automatic welders switch off automatically. This is because the set welding parameters may then no longer be maintained, which impairs the welding quality.

The Right Extension Cables are Crucial

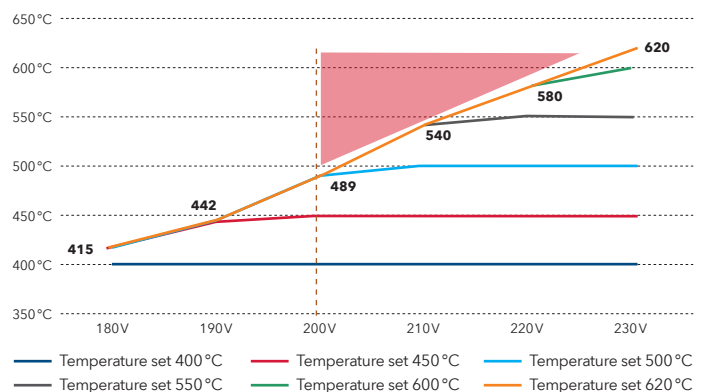
To achieve full power with your electric welding equipment, you need to use the right extension cables. Please observe the following points:

- the larger the cable cross-section, the better
- always use reliable plugs and couplings
- use high-quality extension cables
- circuit breakers should be designed for 230 V, 20 A and for 400 V, 16 A
- observe maximum cable lengths
- use a generator with at least 10 kW capacity (rule of thumb: required power x 2)
- a voltage of 400 V is advantageous for a reliable power supply

With appropriate software ("power management") and a powerful heating element, the welding machine can be operated at 230 V:



Without appropriate software ("power management") and a commercially available heating element, the welding machine can be operated at 230 V:



Thanks to Leister power management, even in the event of undervoltage you can achieve the significantly higher temperatures you need for welding PVC liners, for example.

Quality Assurance with LQS Roofing

Thanks to the Leister Quality System, or LQS for short, you and your customers receive a welding log, supported by GPS, to check your welds, and your Monitored Welding Assistant warns you when your parameters leave the welding area.

Increased Process Security while Welding

With LQS Roofing, you can create professional welding logs in no time to demonstrate the quality of your work.

You can find LQS Roofing for your LQS-compatible Leister devices free of charge in the myLeister app. With public projects to bid and invitations to bid from architects, a welding data log is increasingly required. LQS Roofing supports you in verifying your welding work. This gives you investment security and puts you on a solid footing for the future.



Install the myLeister app for your new, digital experience. For iOS, Android and Windows.



Monitored Welding Assistant

Leister's "Monitored Welding Assistant" monitors your welding process and warns you with an alarm if your set parameters leave the welding area.

Electronic quality assurance saves and logs your welding work and offers the following benefits:

- Verification with GPS-supported welding parameters
- Automatic welding report for checking and minimizing possible errors
- Verification document of the set welding parameters
- Process security with documented weld seam length
- More control over the joining technique and prevailing electrical voltage



**Set up a consultation
with experts**







Welding Machines

VARIMAT 700	10
VARIMAT 500	11
VARIMAT 300	12
BITUMAT B2	13
UNIROOF 700	14
UNIROOF 300	15
UNIDRIVE 500	16

Heat Guns

TRIAC AT	18
TRIAC ST	19
ELECTRON ST	20
HOT JET S	21
NEXHEAT 300 A-LP	22
NEXHEAT 300 A-LP Overlap welding kit	22

Accessories

Accessories for Welding Machines	26
Accessories for Heat Guns	30
More Accessories	32

VARIMAT 700



The VARIMAT 700 automatic welding machine offers constant process reliability and tracking accuracy for flat roof welding. High contact pressure, innovative nozzle swivel-in mechanism, LQS and power management ensure welding quality.

Technical data

Voltage	230 V; 400 V	
Frequency	50/60 Hz	
Power	3680-5700 W	
Speed	1.0-12.0 m/min	3.28-39.37 ft/min
Temperature	100-620 °C	212.0-1148.0 °F
Air volume adjustable	Yes	
Welding nozzle / seam width	40 mm	1.57 in
Welding materials	ECB; EPDM; EVA; FPO; PIB; PO; PVC; PVC-P; TPE; TPO; TPU	
LQS	Yes	
Brushless blower motor	Yes	
Brushless drive motor	Yes	
Length	605.0 mm	23.81 in
Width	335.0 mm	13.18 in
Height	373.0 mm	14.68 in
Weight	37.5 kg	82.67 lb
Power cable length	5.0 m	16.4 ft
Approvals	CB Certification; CE; UKCA	
Protection class	I	
Country of origin	CH	

Product items

VARIMAT 700, 230V/3680W, 40mm, w/o cable	173.180
VARIMAT 700, 400V/5700W, 40mm, CEE 5/16	173.181
VARIMAT 700, 230V/3680W, 40mm, 'F, w/o plug	174.614



Configure product

Nozzles



176.291
Power scraping nozzle, 40 mm, VARIMAT 700/500/300

Machine specific accessories



172.967
Power cable 5 m (Harting), CEE 5/16



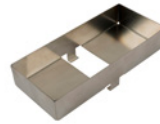
172.968
Power cable 5 m (Harting), EU plug



174.945
Power cable 5 m (Harting), w/o plug



174.946
Power cable 5 m (Harting), CEE 3/16



134.005
Accessories box VARIMAT 700/500/300



174.323
Force sensor for additional weight detection



175.742
Plug (Harting) 6 pin/16A

Spare parts



148.518
Heating element, 230V/4400W



148.521
Heating element, 400V/5500W

All accessories can be found from page 26.

VARIMAT 500



The VARIMAT 500 automatic welding machine offers reliability in flat roof welding. High contact pressure, innovative nozzle swivel-in mechanism and variable transport axis ensure welding quality. Convertible from 230 to 400 V.

Technical data

Voltage	230 V; 400 V	
Frequency	50/60 Hz	
Power	3680-5700 W	
Speed	1-12 m/min	3.28-39.37 ft/min
Temperature	100-620 °C	212-1148 °F
Air volume adjustable	Yes	
Welding nozzle / seam width	40 mm	1.57 in
Welding materials	ECB; EPDM; EVA; FPO; PIB; PO; PVC; PVC-P; TPE; TPO; TPU	
LQS	No	
Brushless blower motor	Yes	
Brushless drive motor	Yes	
Length	605 mm	23.81 in
Width	335 mm	13.18 in
Height	373 mm	14.68 in
Weight	37.5 kg	82.67 lb
Power cable length	5 m	16.4 ft
Approvals	CB Certification; CE	
Protection class	I	
Country of origin	Switzerland	

Product items

VARIMAT 500, 230V/3680W, 40mm, w/o cable	173.182
VARIMAT 500, 400V/5700W, 40mm, CEE 5/16	173.183
VARIMAT 500, 230V/3680W, 40mm, 'F, w/o plug	174.615



Configure product

Nozzles



176.291
Power scraping nozzle, 40 mm, VARIMAT 700/500/300

Machine specific accessories



172.967
Power cable 5 m (Harting), CEE 5/16



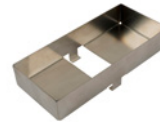
172.968
Power cable 5 m (Harting), EU plug



174.945
Power cable 5 m (Harting), w/o plug



174.946
Power cable 5 m (Harting), CEE 3/16



134.005
Accessories box VARIMAT 700/500/300



174.323
Force sensor for additional weight detection



175.742
Plug (Harting) 6 pin/16A

Spare parts



148.518
Heating element, 230V/4400W



148.521
Heating element, 400V/5500W

All accessories can be found from page 26.

VARIMAT 300



The VARIMAT 300 roof welding machine enables easy and intuitive welding of flat roofs. High contact pressure, tracking accuracy and flexible transport axis for sustainable welding quality are further plus points.

Technical data

Voltage	230 V; 400 V	
Frequency	50/60 Hz	
Power	3680-5700 W	
Speed	1-10 m/min	3.28-32.81 ft/min
Temperature	100-620 °C	212-1148 °F
Air volume adjustable	Yes	
Welding nozzle / seam width	40 mm	1.57 in
Welding materials	ECB; EPDM; EVA; FPO; PIB; PO; PVC; PVC-P; TPE; TPO; TPU	
LQS	No	
Brushless blower motor	No	
Brushless drive motor	Yes	
Length	605 mm	23.81 in
Width	335 mm	13.18 in
Height	373 mm	14.68 in
Weight	37.5 kg	82.67 lb
Power cable length	5 m	16.4 ft
Approvals	CB Certification; CE	
Protection class	I	
Country of origin	Switzerland	

Product items

VARIMAT 300, 400V/5700W, 40mm, CEE 5/16	173.184
VARIMAT 300, 230V/3680W, 40mm, EU plug	173.185
VARIMAT 300, 230V/3680W, 40mm, CEE 3/16	173.186
VARIMAT 300, 230V/3680W, 40mm, °F, w/o plug	174.616



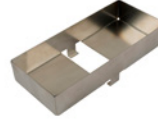
Configure product

Nozzles



176.291
Power scraping nozzle, 40 mm, VARIMAT 700/500/300

Machine specific accessories



134.005
Accessories box VARIMAT 700/500/300



171.490
Additional weight



173.090
Nozzle adjustment gauge VARIMAT 700/500/300



175.074
Rolling Transport Case VARIMAT 700/500/300

Spare parts



148.518
Heating element, 230V/4400W



148.521
Heating element, 400V/5500W

All accessories can be found from page 26.

BITUMAT B2



The BITUMAT B2 is used to weld modified bitumen without flames. With the appropriate bitumen nozzle, precisely welded seams are easily achieved.

Technical data

Voltage	230 V; 400 V	
Frequency	50/60 Hz	
Power	6700 W	
Speed	0.8-12.0 m/min	2.62-39.37 ft/min
Temperature	20-650 °C	68.0-1202.0 °F
Air volume adjustable	Yes	
Welding nozzle / seam width	75-100 mm	2.95-3.93 in
Welding materials	Bitumen; ECB	
LQS	No	
Brushless blower motor	No	
Brushless drive motor	No	
Length	690.0 mm	27.16 in
Width	490.0 mm	19.29 in
Height	330.0 mm	12.99 in
Weight	39.0 kg	85.98 lb
Power cable length	1.2 m	3.93 ft
Approvals	CB Certification; CE; UKCA	
Protection class	I	
Country of origin	CH	

Product items

BITUMAT B2, 230V/6700W, 100mm, CEE 5/32	138.386
BITUMAT B2, 400V/6700W, 100mm, CEE 5/16	140.437
BITUMAT B2, 400V/6700W, 75mm, CEE 5/16	140.438
BITUMAT B2, 230V/6700W, 100mm, w/o plug	140.439
BITUMAT B2, 230V/6700W, 75mm, w/o plug	140.441



**Configure
product**

Nozzles



138.048
Overlap welding nozzle 75 mm BITUMAT B2



138.047
Overlap welding nozzle 100 mm BITUMAT B2

Machine specific accessories



137.895
Pressure roller 100 mm, with heel



140.229
Pressure roller 100 mm, without heel



140.228
Pressure roller 75 mm, without heel



156.447
Pressure roller 80 mm



158.222
Pressure roller 100 mm



155.328
Bitumen kit 120 mm, BITUMAT B2

Spare parts



126.594
Heating element, 400V/6500W



126.386
Heating element, 230V/6500W

All accessories can be found from page 26.

UNIROOF 700



Thanks to LQS, Monitored-Welding-Assistant and Leister's standard nozzle, the UNIROOF 700 automatic roof welding machine is well-suited for welding flat roofs and sets a new standard in the roof industry.

Technical data

Voltage	100 V; 120 V; 230 V	
Frequency	50/60 Hz	
Power	1500-3680 W	
Speed	1-10 m/min	3.28-32.81 ft/min
Temperature	100-620 °C	212-1148 °F
Air volume adjustable	Yes	
Welding nozzle / seam width	40-80 mm	1.57-3.14 in
Welding materials	Bitumen; ECB; EPDM; EVA; FPO; PIB; PVC; TPE; TPO; TPU	
LQS	Yes	
Brushless blower motor	Yes	
Brushless drive motor	Yes	
Length	475 mm	18.7 in
Width	244-360 mm	9.6-14.17 in
Height	260 mm	10.23 in
Weight	17-19.9 kg	37.47-43.87 lb
Power cable length	3 m	9.84 ft
Approvals	CB Certification; CE; UKCA	
Protection class	I	
Country of origin	CH	

Product items

UNIROOF 700, 230V/3680W, 40mm, EU plug	165.834
UNIROOF 700, 120V/1800W, 40mm, US plug	165.835
UNIROOF 700, 230V/3680W, 40mm, w/o plug	165.836
UNIROOF 700, 100V/1500W, 40mm, JP plug	165.837
UNIROOF 700, 230V/3680W, 40mm, CEE 3/16	169.235
UNIROOF 700, 230V/3680W, 40mm, KR plug	169.236
UNIROOF 700, 120V/1800W, 40mm, CEE 3/16	169.237
UNIROOF 700, 230V/3680W, 80mm, EU plug	170.210
UNIROOF 700, 230V/3680W, 40mm, CH plug	176.840



Configure product

Nozzles



170.119
Inseam scraping nozzle, 40 mm, UNIROOF

Machine specific accessories



176.939
Roof structure profil kit universal, UNIROOF 700/300



137.843
Guide bar top



177.020
Bitumen kit 80 mm complete, UNIROOF 700/300



154.522
Transport axis, 300 mm



152.706
Transport axis 210 mm, with movable wheels



167.345
Nozzle adjustment gauge UNIROOF 700/300

Spare parts



145.604
Heating element, 120V/2300W



163.951
Heating element, 100V/2000W



169.791
Heating element, 230V/4400W

All accessories can be found from page 26.

UNIROOF 300



The compact UNIROOF 300 automatic welding machine is ideally suited for welding medium to large flat roofs and is ideal as an entry-level machine due to its simple operation.

Technical data

Voltage	100 V; 120 V; 230 V	
Frequency	50/60 Hz	
Power	1500-3450 W	
Speed	1-10 m/min	3.28-32.81 ft/min
Temperature	100-600 °C	212-1112 °F
Air volume adjustable	Yes	
Welding nozzle / seam width	30-40 mm	1.18-1.57 in
Welding materials	Bitumen; ECB; EPDM; EVA; FPO; PIB; PVC; TPE; TPO; TPU	
LQS	No	
Brushless blower motor	No	
Brushless drive motor	Yes	
Length	475 mm	18.7 in
Width	244 mm	9.6 in
Height	260 mm	10.23 in
Weight	17 kg	37.47 lb
Power cable length	3 m	9.84 ft
Approvals	CB Certification; CE	
Protection class	I	
Country of origin	Switzerland	

Product items

UNIROOF 300, 230V/3450W, 40mm, EU plug	168.634
UNIROOF 300, 120V/1800W, 40mm, US plug	168.635
UNIROOF 300, 100V/1500W, 40mm, JP plug	168.636
UNIROOF 300, 230V/3450W, 40mm, CEE 3/16	168.637
UNIROOF 300, 230V/3450W, 30mm, EU plug	168.638
UNIROOF 300, 230V/3450W, 40mm, w/o plug	168.639
UNIROOF 300, 230V/3450W, 40mm, CH plug	176.841



Configure product

Nozzles



170.119
Inseam scraping nozzle, 40 mm, UNIROOF

Machine specific accessories



176.939
Roof structure profil kit universal, UNIROOF 700/300



137.843
Guide bar top



177.020
Bitumen kit 80 mm complete, UNIROOF 700/300



154.522
Transport axis, 300 mm



152.706
Transport axis 210 mm, with movable wheels



167.345
Nozzle adjustment gauge UNIROOF 700/300

Spare parts



145.604
Heating element, 120V/2300W



163.951
Heating element, 100V/2000W



155.473
Heating element, 230V/3300W

All accessories can be found from page 26.

UNIDRIVE 500



UNIDRIVE 500 semi-automatic welding machine combines manual and automatic welding in a handy plastic welding device. Developed for small roofs, skylight welding, roof connections and small terraces.

Technical data

Voltage	100 V; 120 V; 230 V	
Frequency	50/60 Hz	
Power	1500-2300 W	
Speed	0.7-4.5 m/min	2.29-14.76 ft/min
Temperature	100-580 °C	212.0-1076.0 °F
Air volume adjustable	Yes	
Welding nozzle / seam width	15-40 mm	0.59-1.57 in
Welding materials	ECB; EPDM; EVA; FPO; PIB; PO; PU; PVC; TPE; TPO; TPU	
LQS	No	
Display	Yes	
Brushless blower motor	Yes	
Brushless drive motor	Yes	
Reversible drive	Yes	
Length	275.0 mm	10.82 in
Width	173.0 mm	6.81 in
Height	297.0 mm	11.69 in
Weight	4.5 kg	9.92 lb
Power cable length	3.0 m	9.84 ft
Approvals	CB Certification; CE; UKCA	
Protection class	I	
Country of origin	CH	

Product items

UNIDRIVE 500, 230V/2300W, 40mm, EU plug	163.144
UNIDRIVE 500, 230V/2300W, 40mm, CH plug	163.145
UNIDRIVE 500, 230V/2300W, 40mm, CEE 3/16	163.146
UNIDRIVE 500, 120V/1800W, 40mm, US plug	163.147
UNIDRIVE 500, 120V/1800W, 40mm, CEE 3/16	163.148
UNIDRIVE 500, 100V/1500W, 40mm, JP plug	163.149
UNIDRIVE 500, 230V/2300W, 30mm, EU plug	163.150
UNIDRIVE 500, 230V/2300W, 40mm steel rollers, CEE 3/16	163.151
UNIDRIVE 500, 230V/2300W, 15mm steel rollers, CEE 3/16	163.152



Configure product

Nozzles



164.586
Overlap welding nozzle 15 mm



164.576
Overlap welding nozzle 30 mm



170.120
Inseam scraping nozzle, 40 mm

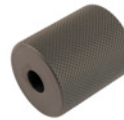


178.119
Overlap welding nozzle left 40 mm

Machine specific accessories



163.930
Pressure roller 15 mm



163.357
Pressure roller 40 mm



162.551
Support roller

Spare parts



145.582
Heating element, 230V/2200W



165.176
Heating element, 120V/2100W



165.179
Heating element, 100V/1600W

All accessories can be found from page 26.



TRIAC AT



The TRIAC AT heat gun is designed to weld and mold plastic. The temperature and air quantity can be set separately by means of its e-Drive control unit.

Technical data

Voltage	100 V; 120 V; 220 V; 230 V	
Frequency	50/60 Hz; 60 Hz	
Power	1500-1600 W	
Temperature	40-620 °C	104-1148 °F
Temperature setting stepless	Yes	
Airflow (20°C)	120-240 l/min	4.23-8.47 cfm
Stepless air volume adjustment	Yes	
Static pressure	3000 Pa	0.43 psi
Eco-Mode	Yes	
Display	Yes	
e-Drive	Yes	
Outdoor use	Yes	
Nozzle connection ø	31.5 mm / 1.25 in; M14	
Length	335 mm	13.18 in
Device diameter	90 mm	3.54 in
Handle diameter	56 mm	2.2 in
Weight	1.02 kg	2.24 lb
Power cable length	3 m	9.84 ft
Noise emission level	67 dB (A)	
Approvals	CE; KC; S+; cULus	
Protection class	II	
Country of origin	Switzerland	

Product items

TRIAC AT, 230V/1600W, EU plug	141.314
TRIAC AT, 120V/1600W, US plug	141.316
TRIAC AT, 100V/1500W, JP plug	141.317
TRIAC AT, 120V/1600W, CEE 3/16	141.319
TRIAC AT, 230V/1600W, UK plug	141.320
TRIAC AT, 230V/1600W, AU plug	141.321
TRIAC AT, 230V/1600W, CH plug	141.322
TRIAC AT, 230V/1600W, CN plug	141.323
TRIAC AT, 230V/1600W, M14, EU plug	142.737
TRIAC AT, 220V/1600W, KR plug	148.005

Nozzles



107.123
Wide slot nozzle (ø 31.5) 20 x 2 mm



107.132
Wide slot nozzle (ø 31.5) 40 x 2 mm



107.124
Wide slot nozzle (ø 31.5) 20 x 2 mm



105.503
Wide slot nozzle (ø 31.5) 20 x 2 mm



105.487
Wide slot nozzle (ø 31.5) 20 x 2 mm



100.303
Tubular nozzle (ø 31.5) ø 5 mm, 37 mm



106.991
Speed welding nozzle (ø 8.0) Profile D ø 5



107.131
Wide slot nozzle (ø 31.5) 80 x 2 mm

Spare parts



142.717
Heating element, 230V/1550W



142.718
Heating element, 120V/1550W



Configure
product

All accessories can be found from page 26.

TRIAC ST



The TRIAC ST is a robust, universally versatile heat gun for welding plastic membranes, and shrinking and molding various thermoplastics.

Technical data

Voltage	100 V; 120 V; 220 V; 230 V	
Frequency	50/60 Hz; 60 Hz	
Power	1500-1600 W	
Temperature	40-700 °C	104-1292 °F
Temperature setting stepless	Yes	
Airflow (20°C)	240 l/min	8.47 cfm
Stepless air volume adjustment	No	
Static pressure	3000 Pa	0.43 psi
Eco-Mode	No	
Display	No	
e-Drive	No	
Outdoor use	Yes	
Nozzle connection ø	31.5 mm / 1.25 in; M14	
Length	338 mm	13.3 in
Device diameter	90 mm	3.54 in
Handle diameter	56 mm	2.2 in
Weight	0.99 kg	2.18 lb
Power cable length	3 m	9.84 ft
Noise emission level	67 dB (A)	
Approvals	CE; KC; S+; cULus	
Protection class	II	
Country of origin	Switzerland	

Product items

TRIAC ST, 230V/1600W, EU plug	141.227
TRIAC ST, 120V/1600W, US plug	141.228
TRIAC ST, 100V/1500W, JP plug	141.230
TRIAC ST, 120V/1600W, CEE 3/16	141.308
TRIAC ST, 230V/1600W, UK plug	141.309
TRIAC ST, 230V/1600W, AU plug	141.310
TRIAC ST, 230V/1600W, CH plug	141.311
TRIAC ST, 230V/1600W, CN plug	141.312
TRIAC ST, 230V/1600W, M14, EU plug	144.013
TRIAC ST, 220V/1600W, KR plug	153.891

Nozzles



107.123
Wide slot nozzle (ø 31.5) 20 x 2 mm



107.132
Wide slot nozzle (ø 31.5) 40 x 2 mm



107.124
Wide slot nozzle (ø 31.5) 20 x 2 mm



105.503
Wide slot nozzle (ø 31.5) 20 x 2 mm



105.487
Wide slot nozzle (ø 31.5) 20 x 2 mm



100.303
Tubular nozzle (ø 31.5) ø 5 mm, 37 mm



106.991
Speed welding nozzle (ø 8.0) Profile D ø 5



107.131
Wide slot nozzle (ø 31.5) 80 x 2 mm

Spare parts



142.717
Heating element, 230V/1550W



142.718
Heating element, 120V/1550W



Configure
product

All accessories can be found from page 26.

ELECTRON ST



With a power of 3400 Watts, the ELECTRON ST is an especially strong heat gun. Well-suited for professional welding of modified bitumen and thermoplastics with high material strength.

Technical data

Voltage	120 V; 200 V; 220 V; 230 V	
Frequency	50/60 Hz; 60 Hz	
Power	2300-3400 W	
Temperature	40-650 °C	104-1202 °F
Temperature setting stepless	Yes	
Airflow (20°C)	360 l/min	12.71 cfm
Stepless air volume adjustment	No	
Static pressure	3400 Pa	0.49 psi
Eco-Mode	No	
Display	No	
e-Drive	No	
Outdoor use	Yes	
Nozzle connection ø	50 mm / 2 in	
Length	338 mm	13.3 in
Device diameter	90 mm	3.54 in
Handle diameter	56 mm	2.2 in
Weight	1.18 kg	2.6 lb
Power cable length	3 m	9.84 ft
Noise emission level	67 dB (A)	
Approvals	CE; KC; S+	
Protection class	II	
Country of origin	Switzerland	

Product items

ELECTRON ST, 120V/2400W, US plug	145.562
ELECTRON ST, 120V/2400W, CEE 3/32	145.563
ELECTRON ST, 200V/3000W, JP plug	145.564
ELECTRON ST, 230V/3400W, AU plug	145.565
ELECTRON ST, 230V/3400W, CN plug	145.566
ELECTRON ST, 230V/3400W, EU plug	145.567
ELECTRON ST, 230V/3400W, CEE 3/16	145.568
ELECTRON ST, 230V/3400W, w/o plug	145.574
ELECTRON ST, 230V/3400W, CH plug	146.370
ELECTRON ST, 230V/2300W, EU plug	149.673
ELECTRON ST, 220V/3400W, KR plug	154.839



Configure product

Nozzles



107.258
Wide slot nozzle (ø 50.0) 70 x 10 mm



107.653
Wide slot nozzle (ø 50.0) 75 x 2 mm



107.270
Wide slot nozzle (ø 50.0) 150 x 12 mm



142.281
Wide slot nozzle (ø 50.0) 74 x 3 mm

Machine specific accessories



151.068
Stand ELECTRON ST

Spare parts



145.606
Heating element, 230V/3300W



145.604
Heating element, 120V/2300W

All accessories can be found from page 26.

HOT JET S



The HOT JET S is a particularly compact and handy heat gun. Equipped with an ergonomic handle and infinitely adjustable temperature, the HOT JET S is ideal for longer welding work.

Technical data

Voltage	100 V; 120 V; 220 V; 230 V	
Frequency	50/60 Hz; 60 Hz	
Power	460 W	
Temperature	20-600 °C	68-1112 °F
Temperature setting stepless	Yes	
Airflow (20°C)	20-80 l/min	0.7-2.82 cfm
Stepless air volume adjustment	Yes	
Static pressure	1600 Pa	0.23 psi
Eco-Mode	No	
Display	No	
e-Drive	No	
Outdoor use	Yes	
Nozzle connection ø	21.3 mm / 0.85 in	
Length	235 mm	9.25 in
Device diameter	70 mm	2.75 in
Handle diameter	40 mm	1.57 in
Weight	0.36 kg	0.79 lb
Power cable length	3 m	9.84 ft
Noise emission level	56 dB (A)	
Approvals	CE; KC; S+; UL	
Protection class	II	
Country of origin	Switzerland	

Product items

HOT-JET S, 230V/460W, EU plug	100.648
HOT-JET S, 230V/460W, CH plug	100.688
HOT-JET S, 230V/460W, AU plug	100.854
HOT-JET S, 120V/460W, US plug	100.859
HOT-JET S, 120V/460W, w/o plug	100.862
HOT-JET S, 100V/460W, JP plug	100.863
HOT-JET S, 230V/460W, CN plug	138.414
HOT-JET S, 220V/460W, KR plug	140.030



Configure product

Nozzles



107.141
Wide slot nozzle (ø 21.3) 15 x 2 mm



107.142
Wide slot nozzle (ø 21.3) 20 x 2 mm



105.549
Wide slot nozzle (ø 21.3) 10 x 2 mm



107.144
Tubular nozzle (ø 21.3) ø 5 mm, 41 mm



105.556
Wide slot nozzle (ø 21.3) 20 x 2 mm



106.991
Speed welding nozzle (ø 8.0) Profile D ø 5

Spare parts



100.818
Heating element, 230V/435W



103.607
Heating element, 120V/435W



103.606
Heating element, 100V/435W

All accessories can be found from page 26.

NEXHEAT 300 A-LP



The NEXHEAT 300 A-LP Cordless Heating Blower with adjustable temperature (50-500 °C/122-932 °F) and air volume is ideal for repairs and detailed work. Mobile and battery-powered - perfect for construction and industry.

Technical data

Voltage battery	18 V	
Battery capacity	144 Wh	
Power	600 W	
Temperature	50-500 °C	122-932 °F
Temperature setting stepless	No	
Airflow (20°C)	50-150 l/min	1.76-5.29 cfm
Stepless air volume adjustment	No	
Eco-Mode	No	
Display	Yes	
e-Drive	Yes	
Outdoor use	Yes	
Battery operation	Yes	
Battery included	No	
Nozzle connection ø	36.5 mm / 1.45 in	
Length	178 mm	7 in
Width	72 mm	2.83 in
Handle diameter	33 mm	1.29 in
Noise emission level	< 67 dB (A)	
Approvals	CE	
Country of origin	Switzerland	

Product items

NEXHEAT 300 A-LP, 18V/600W, EU	179.254
NEXHEAT 300 A-LP, 18V/600W, US	179.256



Configure product

NEXHEAT 300 A-LP Overlap welding kit



The NEXHEAT 300 A-LP battery hot-air blower in the kit offers 50-500 °C (122-932 °F) adjustable temperature, five air levels and wireless freedom. Ideal for plastic welding - mobile, efficient and perfect for industry and construction site.

Technical data

Temperature	50-500 °C	122-932 °F
Temperature setting stepless	No	
Airflow (20°C)	50-150 l/min	1.76-5.29 cfm
Stepless air volume adjustment	No	
Eco-Mode	No	
Display	Yes	
e-Drive	Yes	
Outdoor use	Yes	
Battery operation	Yes	
Nozzle connection ø	36.5 mm / 1.45 in	
Length	178 mm	7 in
Width	72 mm	2.83 in
Handle diameter	33 mm	1.29 in
Noise emission level	< 67 dB (A)	
Approvals	CE	
Country of origin	Switzerland	

Product items

NEXHEAT 300 A-LP, 18V/600W, Overlap welding kit, EU/CH plug	179.255
NEXHEAT 300 A-LP, 18V/600W, Overlap welding kit, US plug	179.257

The Overlap welding kit is only available in Austria, Belgium, Czech Republic, Denmark, Estonia, Finland, France, Germany, Hungary, Italy, Netherlands, Norway, Poland, Romania, Slovakia, Slovenia, Spain, Sweden, Switzerland and United States.



Configure product

Nozzles



106.998
Wide slot nozzle (ø 36.5) 20 x 2 mm



106.999
Wide slot nozzle (ø 36.5) 40 x 2 mm

Machine specific accessories



179.259
Tool case







Accessories for Welding Machines

Nozzles



176.291
Power scraping nozzle, 40 mm, VARIMAT 700/500/300
VARIMAT 300, VARIMAT 500, VARIMAT 700



176.978
Overlap welding nozzle 20 mm, VARIMAT 700/500/300
VARIMAT 300, VARIMAT 500, VARIMAT 700



178.172
Overlap welding nozzle 30 mm, VARIMAT 700/500/300
VARIMAT 300, VARIMAT 500, VARIMAT 700



138.048
Overlap welding nozzle 75 mm BITUMAT B2
BITUMAT B2



138.047
Overlap welding nozzle 100 mm BITUMAT B2
BITUMAT B2



170.119
Inseam scraping nozzle, 40 mm, UNIROOF 300, UNIROOF 700



177.022
Overlap welding nozzle 30 mm, UNIROOF 700/300
UNIROOF 300, UNIROOF 700



164.586
Overlap welding nozzle 15 mm
UNIDRIVE 500



164.576
Overlap welding nozzle 30 mm
UNIDRIVE 500



170.120
Inseam scraping nozzle, 40 mm
UNIDRIVE 500



164.403
Overlap welding nozzle 40 mm
UNIDRIVE 500

Machine specific accessories



172.967
Power cable 5 m (Harting), CEE 5/16
VARIMAT 500, VARIMAT 700



172.968
Power cable 5 m (Harting), EU plug
VARIMAT 500, VARIMAT 700



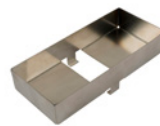
174.945
Power cable 5 m (Harting), w/o plug
VARIMAT 500, VARIMAT 700



174.946
Power cable 5 m (Harting), CEE 3/16
VARIMAT 500, VARIMAT 700



174.960
Power cable 3 m (Harting), KR plug
VARIMAT 500, VARIMAT 700



134.005
Accessories box VARIMAT 700/500/300
VARIMAT 300, VARIMAT 500, VARIMAT 700



174.323
Force sensor for additional weight detection
VARIMAT 500, VARIMAT 700



175.742
Plug (Harting) 6 pin/16A
VARIMAT 500, VARIMAT 700



171.490
Additional weight
VARIMAT 300, VARIMAT 500, VARIMAT 700



173.090
Nozzle adjustment gauge VARIMAT 700/500/300
VARIMAT 300, VARIMAT 500, VARIMAT 700



175.074
Rolling Transport Case VARIMAT 700/500/300
VARIMAT 300, VARIMAT 500, VARIMAT 700

Machine specific accessories



119.111
Assembly cone for silicone pressure rollers
VARIMAT 300, VARIMAT 500, VARIMAT 700



143.163
Silicone rubber roller \varnothing 62/81 x 51 mm, 25 Shore A
VARIMAT 300, VARIMAT 500, VARIMAT 700



176.977
Roof structure profil kit, VARIMAT 700/500/300
VARIMAT 300, VARIMAT 500, VARIMAT 700



137.895
Pressure roller 100 mm, with heel
BITUMAT B2



140.229
Pressure roller 100 mm, without heel
BITUMAT B2



140.228
Pressure roller 75 mm, without heel
BITUMAT B2



156.447
Pressure roller 80 mm
BITUMAT B2



158.222
Pressure roller 100 mm
BITUMAT B2



140.476
Lifting device BITUMAT B2
BITUMAT B2

Machine specific accessories



155.328
Bitumen kit 120 mm, BITUMAT B2
BITUMAT B2



137.896
Pressure roller 75 mm, with heel
BITUMAT B2



140.489
Equipment box
BITUMAT B2



137.843
Guide bar top
UNIROOF 300, UNIROOF 700



132.429
Welding plate
UNIROOF 300, UNIROOF 700, VARIMAT 300,
VARIMAT 500, VARIMAT 700



154.522
Transport axis, 300 mm
UNIROOF 300, UNIROOF 700



152.706
Transport axis 210 mm, with movable wheels
UNIROOF 300, UNIROOF 700



167.345
Nozzle adjustment gauge UNIROOF 700/300
UNIROOF 300, UNIROOF 700



176.939
Roof structure profil kit universal, UNIROOF 700/300
UNIROOF 300, UNIROOF 700

Machine specific accessories



177.022
Overlap welding nozzle 30 mm, UNIROOF 700/300
UNIROOF 300, UNIROOF 700



177.020
Bitumen kit 80 mm complete, UNIROOF 700/300
UNIROOF 300, UNIROOF 700



177.021
Overlap welding nozzle 80 mm, UNIROOF 700/300
UNIROOF 300, UNIROOF 700



152.741
Additional weight lateral
UNIROOF 300, UNIROOF 700



152.742
Additional weight front
UNIROOF 300, UNIROOF 700



154.827
Tool case
UNIROOF 300, UNIROOF 700



155.577
Locking plate for additional weights
UNIROOF 300, UNIROOF 700



108.129
Guide bar top
UNIROOF 300, UNIROOF 700



163.930
Pressure roller 15 mm
UNIDRIVE 500



163.357
Pressure roller 40 mm
UNIDRIVE 500



162.551
Support roller
UNIDRIVE 500

Machine specific accessories



169.780
Support roll
UNIDRIVE 500



159.911
Pressure roller hub
UNIDRIVE 500



161.156
Silicone rubber roller ø 22/36 x 49 mm, 50 Shore A
UNIDRIVE 500



164.605
Tool case
UNIDRIVE 500



156.531
Carrying strap
UNIDRIVE 500



167.248
Cable clamp complete
UNIDRIVE 500



Accessories for Heat Guns

Nozzles



107.123
Wide slot nozzle (ø 31.5) 20 x 2 mm
TRIAC AT, TRIAC ST



107.132
Wide slot nozzle (ø 31.5) 40 x 2 mm
TRIAC AT, TRIAC ST



107.124
Wide slot nozzle (ø 31.5) 20 x 2 mm
TRIAC AT, TRIAC ST



105.503
Wide slot nozzle (ø 31.5) 20 x 2 mm
TRIAC AT, TRIAC ST



105.487
Wide slot nozzle (ø 31.5) 20 x 2 mm
TRIAC AT, TRIAC ST



100.303
Tubular nozzle (ø 31.5) ø 5 mm, 37 mm
TRIAC AT, TRIAC ST



107.129
Wide slot nozzle (ø 31.5) 60 x 2 mm
TRIAC AT, TRIAC ST



107.131
Wide slot nozzle (ø 31.5) 80 x 2 mm
TRIAC AT, TRIAC ST



105.527
Wide slot nozzle (ø 31.5) 40 x 8 mm
TRIAC AT, TRIAC ST



107.133
Wide slot nozzle (ø 31.5) 40 x 2 mm
TRIAC AT, TRIAC ST



105.475
Wide slot nozzle (ø 31.5) 20 x 2 mm
TRIAC AT, TRIAC ST

Nozzles



105.485
Wide slot nozzle (ø 31.5) 25 x 2 mm
TRIAC AT, TRIAC ST



105.494
Wide slot nozzle (ø 31.5) 30 x 2 mm
TRIAC AT, TRIAC ST



105.575
Tubular nozzle (ø 31.5) ø 5 mm, 100 mm
TRIAC AT, TRIAC ST



106.982
Tubular nozzle (ø 31.5) ø 5 mm, 150 mm
TRIAC AT, TRIAC ST



105.576
Tubular nozzle (ø 31.5) ø 5 mm, 30 x 60 mm
TRIAC AT, TRIAC ST



107.130
Wide slot nozzle (ø 31.5) 40 x 2 mm
TRIAC AT, TRIAC ST



107.125
Wide slot nozzle (ø 31.5) 20 x 2 mm
TRIAC AT, TRIAC ST



107.258
Wide slot nozzle (ø 50.0) 70 x 10 mm
ELECTRON ST



107.653
Wide slot nozzle (ø 50.0) 75 x 2 mm
ELECTRON ST



107.270
Wide slot nozzle (ø 50.0) 150 x 12 mm
ELECTRON ST



142.281
Wide slot nozzle (ø 50.0) 74 x 3 mm
ELECTRON ST

Nozzles



107.141
Wide slot nozzle (ø 21.3) 15 x 2 mm
HOT JET S



107.142
Wide slot nozzle (ø 21.3) 20 x 2 mm
HOT JET S



105.549
Wide slot nozzle (ø 21.3) 10 x 2 mm
HOT JET S



107.144
Tubular nozzle (ø 21.3) ø 5 mm, 41 mm
HOT JET S



105.556
Wide slot nozzle (ø 21.3) 20 x 2 mm
HOT JET S



106.989
Speed welding nozzle (ø 8.0) Profile D ø 3
HOT JET S, TRIAC AT, TRIAC ST



106.990
Speed welding nozzle (ø 8.0) Profile D ø 4
HOT JET S, TRIAC AT, TRIAC ST



106.991
Speed welding nozzle (ø 8.0) Profile D ø 5
HOT JET S, TRIAC AT, TRIAC ST

Machine specific accessories



116.586
Tool case
ELECTRON ST, TRIAC AT, TRIAC ST



107.348
Storage stand
ELECTRON ST, HOT JET S, TRIAC AT, TRIAC ST



169.010
Soldering iron kit, cylinder and tip shape
TRIAC AT



176.537
Soldering iron kit, tip and chisel shape
TRIAC AT



169.168
Copper iron tempered, for tip shape soldering
TRIAC AT



169.169
Copper iron tempered, for customized soldering
TRIAC AT



169.887
Copper iron tempered, for chisel shape soldering
TRIAC AT



169.176
Stand for soldering iron kit, TRIAC AT
TRIAC AT



169.011
Soldering iron adapter for TRIAC AT
TRIAC AT, TRIAC ST



151.068
Stand ELECTRON ST
ELECTRON ST

More Accessories

General accessories



140.160
Pressure roller 40 mm, silicone



140.161
Pressure roller 28 mm, silicone



106.976
Pressure roller 28 mm, PTFE



175.657
Pressure roller 8 mm, PTFE



175.658
Pressure roller 8 mm, PTFE



106.972
Pressure roller 6 mm, brass



106.974
Pressure roller 80 mm, silicone



151.382
Kehlfix for plastic liners



153.009
Plastfix



151.188
Edge planer for T-joints



125.917
Blade sharpener

General accessories



172.482
Seam weld tester



174.048
Seam weld tester



172.483
Seam weld tester multitool



138.817
Wire brush, stainless steel



129.656
Wire brush, stainless steel



116.798
Wire brush, brass



151.847
Cylinder brush, brass ø 15 mm



100.530
Allen wrench 4 mm



150.715
Screwdriver, Torx T20



157.544
Utility scissors, 260 mm/10.2 in














137.855
Utility Knife

General accessories

	138.902 Hook blade (100 pcs)
	138.539 Trapezoid blade (100 pcs)
	160.353 Cable reel 25 m (PUR), 5 x 2.5 mm ² , CEE 400V/16A; 2xEU 3/16, 1xCEE 5/16
	161.152 Cable reel 25 m (PUR), 5 x 2.5 mm ² , CEE 400V/16A; 2xT23 (IP55), 1xCEE 5/16
	161.207 Cable reel 25 m (PUR), 5 x 2.5 mm ² , CEE 400V/16A; 2xFR,BE,CZ,PL Type E, 1xCEE 5/16
	164.048 Cable roll 45 m (PUR), 3 x 2.5 mm ² , EU 230V/16A; 4xEU 3/16
	169.190 Cable reel 45 m (PUR), 3 x 2.5 mm ² , T23 (IP55) 230V/16A; 4xT23 (IP55)
	117.777 Extension cable 15 m (PUR), 3 x 2.5 mm ² , T23 (IP55)
	160.015 Extension cable 15 m (PUR), 5 x 2.5mm ² , CEE 400V/16A
	159.239 Extension cable 15 m (PUR), 3 x 2.5 mm ² , EU 230V/16A

Testing equipment

	144.000 VACUUM PLATE 100-LP, 18.0V/4.0Ah, EU/CH plug
	144.800 VACUUM PLATE 100-LP, w/o battery, w/o charger
	139.059 EXAMO 300F USB, 230V/200W, EU plug
	139.060 EXAMO 600F USB, 230V/200W, EU plug
	134.832 Test and calibration kit for EXAMO
	144.416 USB memory stick, 16 GB
	136.961 Temperature measuring device G1200
	136.963 Insertion probe type K, ø 1.5 x 100 mm
	142.570 Tool case
	159.514 Welding seam test template
	119.093 USB-A cable for GPS live tracker



Legal Notices

Contents

We endeavor to ensure all information is correct, up-to-date and complete while carefully preparing the contents of this brochure. We cannot assume any liability for the information offered. We reserve the right to change or update all information provided at any time without further notice.

Copyright/Industrial Property Rights

Texts, images, graphics and their arrangement are subject to copyright protection and other protective laws. The reproduction, modification, transfer or publication of part or all of the contents of this brochure is prohibited in any form, except for private, non-commercial purposes.

All marks contained in this brochure (protected trademarks, such as logos and business names) are the property of Leister AG, Leister Brands AG or third parties and may not be used, copied or distributed without prior written consent.

Modifications

Modifications can be made at any time.

© Leister AG
Galileo-Strasse 10
6056 Kaegiswil
Switzerland

+41 41 662 74 74
leister@leister.com
leister.com



**Sign up now
for the newsletter**



Leister

Leister Technologies AG is an ISO 9001 certified enterprise.